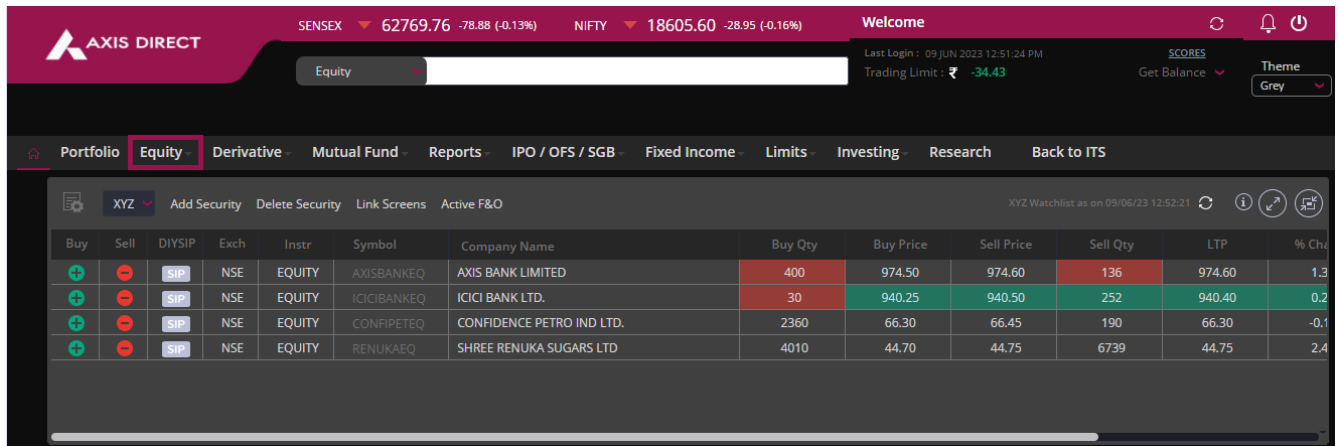


How to place an Equity CASH BUY order – New Swift Trade?

1. For Buy Orders, full order amount is required in the linked bank account or the full amount needs to be transferred (In case of non Axis Bank accounts)
2. Shares are credited on T+1 working day to your demat account after execution of Buy Order
3. Useful for investor looking for long term capital appreciation
4. Customer is eligible for corporate actions like dividend, bonus, etc if announced by the company.
5. AMO is also allowed in cash product

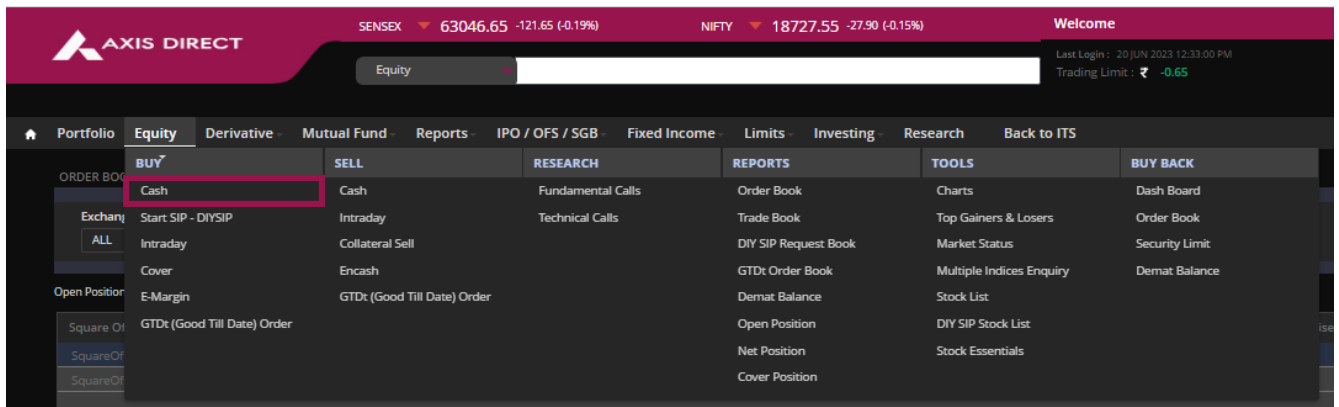
Step 1: [Click Here](#) to login to your account, click on 'SWIFT TRADE' and then select 'Equity'



The screenshot shows the Axis Direct Equity Watchlist interface. At the top, there are market indices: SENSEX at 62769.76 (-0.13%) and NIFTY at 18605.60 (-0.16%). The user is logged in as 'Welcome' with a last login time of 09 JUN 2023 12:51:24 PM and a trading limit of ₹ -34.43. The main navigation bar includes Portfolio, Equity (highlighted), Derivative, Mutual Fund, Reports, IPO / OFS / SGB, Fixed Income, Limits, Investing, Research, and Back to ITS. Below the navigation bar, there are options to Add Security, Delete Security, Link Screens, and Active F&O. The watchlist table contains the following data:

Buy	Sell	DIYSIP	Exch	Instr	Symbol	Company Name	Buy Qty	Buy Price	Sell Price	Sell Qty	LTP	% Chg
+	-	SIP	NSE	EQUITY	AXISBANKEQ	AXIS BANK LIMITED	400	974.50	974.60	136	974.60	1.3
+	-	SIP	NSE	EQUITY	ICICIBANKEQ	ICICI BANK LTD.	30	940.25	940.50	252	940.40	0.2
+	-	SIP	NSE	EQUITY	CONFIPETEQ	CONFIDENCE PETRO IND LTD.	2360	66.30	66.45	190	66.30	-0.1
+	-	SIP	NSE	EQUITY	RENUKAEQ	SHREE RENUKA SUGARS LTD	4010	44.70	44.75	6739	44.75	2.4

Step 2: Select 'Cash' under the 'BUY' column



The screenshot shows the Axis Direct Equity Buy Order Book interface. At the top, there are market indices: SENSEX at 63046.65 (-0.19%) and NIFTY at 18727.55 (-0.15%). The user is logged in as 'Welcome' with a last login time of 20 JUN 2023 12:33:00 PM and a trading limit of ₹ -0.65. The main navigation bar includes Portfolio, Equity (highlighted), Derivative, Mutual Fund, Reports, IPO / OFS / SGB, Fixed Income, Limits, Investing, Research, and Back to ITS. Below the navigation bar, there are options to Add Security, Delete Security, Link Screens, and Active F&O. The 'BUY' column is highlighted, and the 'Cash' option is selected. The 'BUY BACK' column is also visible.

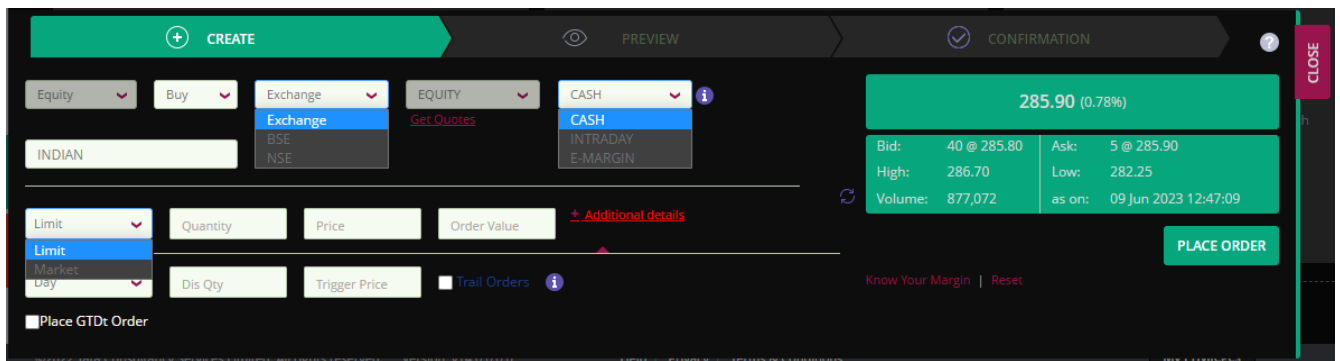
BUY	SELL	RESEARCH	REPORTS	TOOLS	BUY BACK
Cash	Cash	Fundamental Calls	Order Book	Charts	Dash Board
Start SIP - DIYSIP	Intraday	Technical Calls	Trade Book	Top Gainers & Losers	Order Book
ALL	Intraday		DIY SIP Request Book	Market Status	Security Limit
Cover	Collateral Sell		GTDs Order Book	Multiple Indices Enquiry	Demat Balance
Open Position	Encash		Demat Balance	Stock List	
E-Margin	GTDs (Good Till Date) Order		Open Position	DIY SIP Stock List	
Square Off			Net Position	Stock Essentials	
Square Off			Cover Position		
Square Off					

Step 3: Select the desired ‘Exchange’, enter the desired scrip name, select the order type viz. **Limit/Market** and click on ‘**PLACE ORDER**’ to proceed with the order.

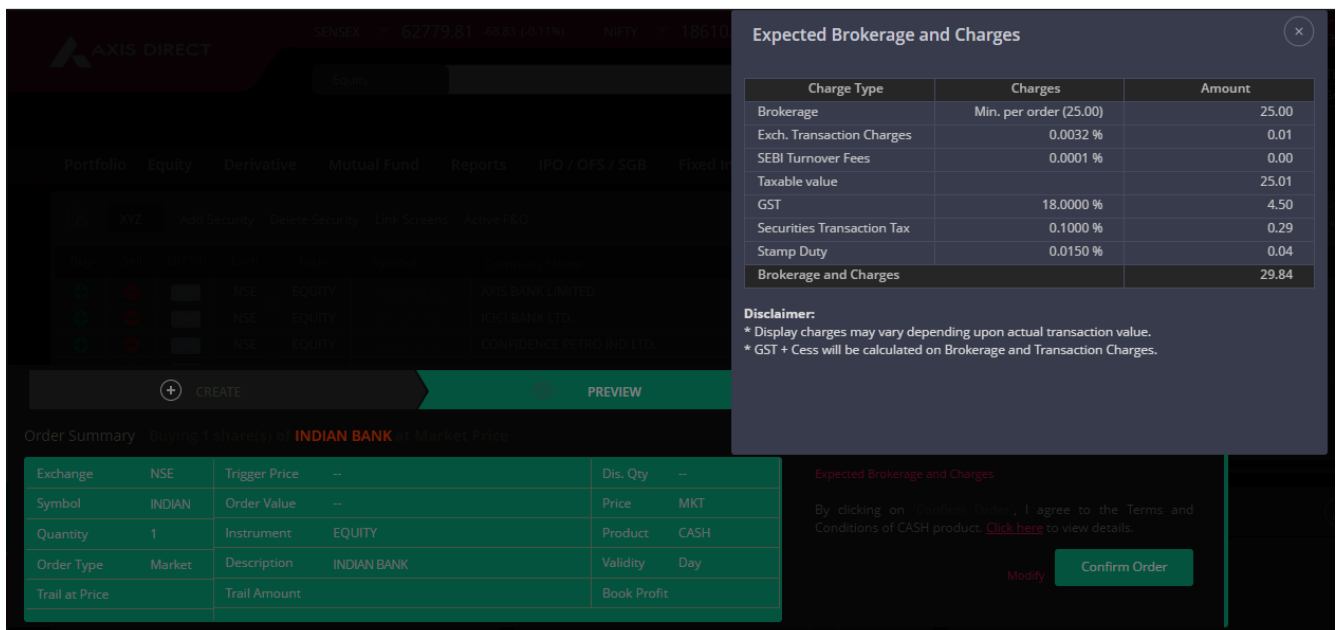
Upon clicking on the red ‘**Additional details**’ link you have the option to select the order’s validity and the stop loss order along with the BUY order by entering Trigger Price:

Validity of the orders:

- 1) **Day:** Good until 03:30PM hence called as Day/Session
- 2) **Immediate Or Cancel (IOC):** If the desired price for the order is available when the order is placed the order would go through or would get cancelled right away, only available for Limit orders
- 3) **GTDt:** A type of order that allows you to place a desired limit price order for the next 90 calendar days



Step 4: You can check the order details on this screen; you can also click on the red ‘**Expected Brokerage and Charges**’ link to know the tentative Brokerage and Charges applicable for your order. Once you agree to the order click on ‘**Confirm Order**’ to proceed



Step 5: The system will now ask you to hold the funds for your order from your linked bank account; this step will be skipped if there are enough funds available in your trading limits

Order Summary: Buying 1 share(s) of **INDIAN RAILWAY FIN CORP L** at Market Price

Exchange	NSE	Trigger Price	--	Dis. Qty	--
Symbol	IRFCEQ	Order Value	--	Price	MKT
Quantity	1	Instrument	EQUITY	Product	CASH
Order Type	Market	Description	INDIAN RAILWAY FIN CORP L	Validity	Day
Trail at Price		Trail Amount		Book Profit	

Expected Brokerage and Charges

By clicking on 'Confirm Order', I agree to the Terms and Conditions of CASH product. [Click here](#) to view details.

Modify **CONFIRM AND HOLD**

There is Cash Limit Shortfall of Rs.72.97. Please click 'Confirm and Hold' for online fund hold/transfer and place order

Bank Name: **AXIS BANK LTD** Bank Acc. No: **XXXXXXXXXXXXXXXX**

Step 6: Your order is initiated; you can check the status of the order on the same page by click on the **Refresh** icon next to 'Sent to Exchange'

Order Status: Buying 1 share(s) of **INDIAN RAILWAY FIN CORP L** at Market Price

Exchange	NSE	Trigger Price	--	Dis. Qty	--
Symbol	IRFCEQ	Order Value	--	Price	MKT
Quantity	1	Instrument	EQUITY	Product	CASH
Order Type	Market	Description	INDIAN RAILWAY FIN CORP L	Validity	Day
Trail at Price		Trail Amount		Book Profit	

Your Internal Order Reference Number is 20230609119069

STATUS: Sent to Exchange

Order Book | Add to watchlist **Place Another Order**

Order Status: Buying 1 share(s) of **INDIAN RAILWAY FIN CORP L** at Market Price

Exchange	NSE	Trigger Price	--	Dis. Qty	--
Symbol	IRFCEQ	Order Value	--	Price	MKT
Quantity	1	Instrument	EQUITY	Product	CASH
Order Type	Market	Description	INDIAN RAILWAY FIN CORP L	Validity	Day
Trail at Price		Trail Amount		Book Profit	

Your Internal Order Reference Number is 20230609119069

STATUS: Executed

Order Book | Add to watchlist **Place Another Order**

Or

You can check the 'Order Book' under the 'REPORTS' column anytime during the day

AXIS DIRECT


SENSEX 63046.65 -121.65 (-0.19%) NIFTY 18727.55 -27.90 (-0.15%)

Welcome

Last Login: 20 JUN 2023 12:33:00 PM Trading Limit: ₹ -0.65

Equity

Portfolio	Equity	Derivative	Mutual Fund	Reports	IPO / OFS / SGB	Fixed Income	Limits	Investing	Research	Back to ITS
ORDER BOOK	BUY	SELL	RESEARCH	REPORTS	TOOLS	BUY BACK				
	Cash	Cash	Fundamental Calls	Order Book	Charts	Dash Board				
	Exchange	Intraday	Technical Calls	Trade Book	Top Gainers & Losers	Order Book				
	Start SIP - DIYSIP	Intraday		DIY SIP Request Book	Market Status	Security Limit				
	ALL	Collateral Sell		GTDs Order Book	Multiple Indices Enquiry	Demat Balance				
	Intraday	Encash		Demat Balance	Stock List					
	Cover	GTDs (Good Till Date) Order		Open Position	DIY SIP Stock List					
Open Position	E-Margin			Net Position	Stock Essentials					
	GTDs (Good Till Date) Order			Cover Position						
Square Off										
Square Off										
Square Off										



SENSEX ▼ 62697.20 -151.44 (-0.24%)
NIFTY ▼ 18582.45 -52.10 (-0.28%)

Welcome
Last Login: 09 JUN 2023 12:51:24 PM
Trading Limit: ₹ -34.43

Equity

SCORES
Get Balance ▼
Theme Grey ▼

Portfolio
Equity
Derivative
Mutual Fund
Reports
IPO / OFS / SGB
Fixed Income
Limits
Investing
Research
Back to ITS

ORDER BOOK
TRADE BOOK
DIY SIP REQUEST BOOK
GTDT ORDER BOOK
DEMAT BALANCE
OPEN POSITION
NET POSITION
COVER POSITION

Exchange
Segment
Instrument
Product
Mode
Order Type
Status

GO

Order Book for xxxxxxxx as on: Fri Jun 9 2023 13:54pm
🔄 📄 🏠 ?

Modify	Cancel	Date and Time	Exch	Company Name	Ord	Side	Dis	Qty	Product	LTP	Price	Status	Trig Price	Order Number	Validity
-	-	09/06/2023 13:53:25	NSE	INDIAN RAILWAY FIN CORP L	Market	BUY	0	1	CASH	33.10	MKT	Executed	0	20230609119069	-
-	-	09/06/2023 13:50:27	NSE	HERO MOTOCORP LIMITED	Market	SELL	0	1	E-MARGIN	2917.90	MKT	Executed	0	20230609117706	-

END