

## How to place an E-Margin BUY order – New Swift Trade?

E-Margin is a convenient product offered by us, allowing you to trade with a margin provided by our platform when you have insufficient funds for a particular trade. This margin is available on a case-by-case basis for Transaction + 365 (T+365 days) in both exchanges. Daily delayed payment charges are applied to your account for the utilized margin until you square off (sell) or convert the position/s to delivery starting from T+3 days, at an annual interest rate.

Unlike a 'Cash' order, E-Margin orders do not require you to pay the full order value upfront.

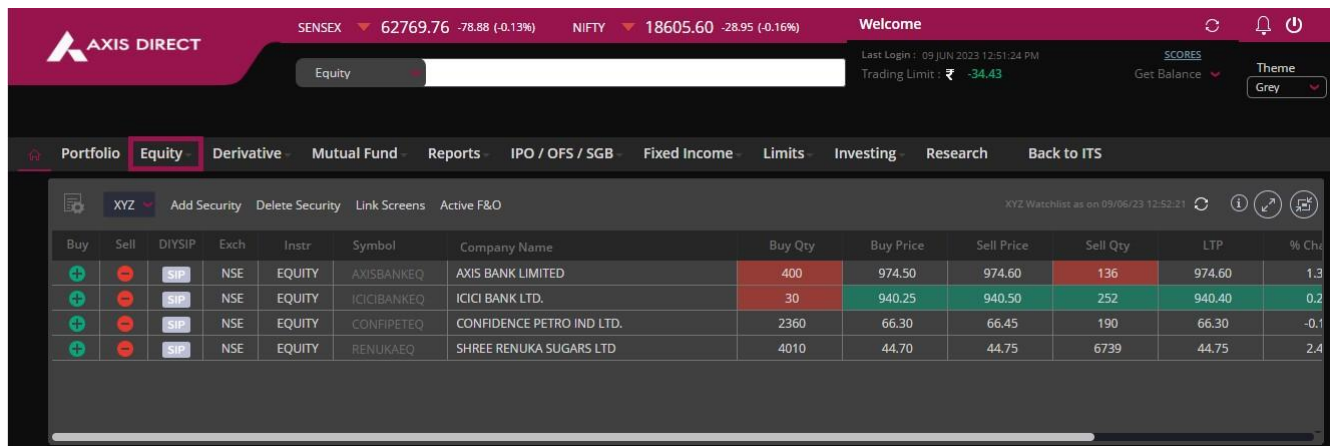
**For example:** Suppose you wish to buy 100 shares of RELIANCE at Rs. 1500 on T day, and the applicable E-Margin percentage for the scrip is 40%. In this case, you only need to pay Rs. 60,000 as margin. You can pay this margin either by debiting your linked bank account or utilizing the collateral limits provided, such as pledged securities in your demat account.

Please note that positions created under this facility can be squared off or converted to delivery until T+240 days or before a specified time set by Axis Direct.

**Important:** Whenever you BUY positions using E-Margin, you will receive an SMS from NSDL/CDSL requesting you to pledge the stocks. Pledging the stocks is mandatory to avoid auto square off of these positions on T+6th day.

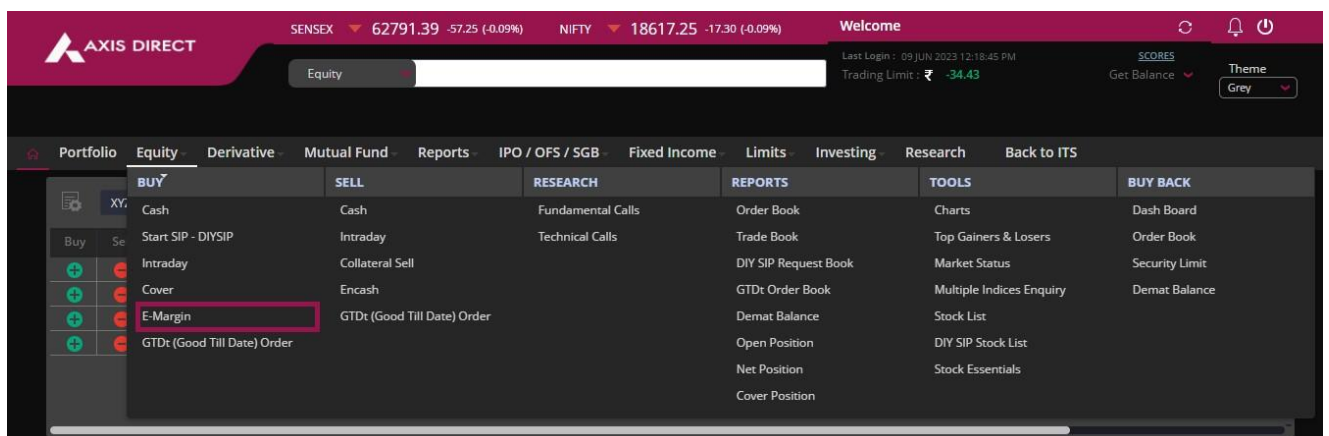
Here's how you can place an E-Margin BUY order using the New Swift Trade platform:

**Step 1:** [Click Here](#) to login to your account, click on '**SWIFT TRADE**' and then select '**Equity**'



Buy	Sell	DIYSIP	Exch	Instr	Symbol	Company Name	Buy Qty	Buy Price	Sell Price	Sell Qty	LTP	% Ch
+	-	SIP	NSE	EQUITY	AXISBANKEQ	AXIS BANK LIMITED	400	974.50	974.60	136	974.60	1.3
+	-	SIP	NSE	EQUITY	ICICIBANKEQ	ICICI BANK LTD.	30	940.25	940.50	252	940.40	0.2
+	-	SIP	NSE	EQUITY	CONFIPETEQ	CONFIDENCE PETRO IND LTD.	2360	66.30	66.45	190	66.30	-0.1
+	-	SIP	NSE	EQUITY	RENUKAEQ	SHREE RENUKA SUGARS LTD	4010	44.70	44.75	6739	44.75	2.4

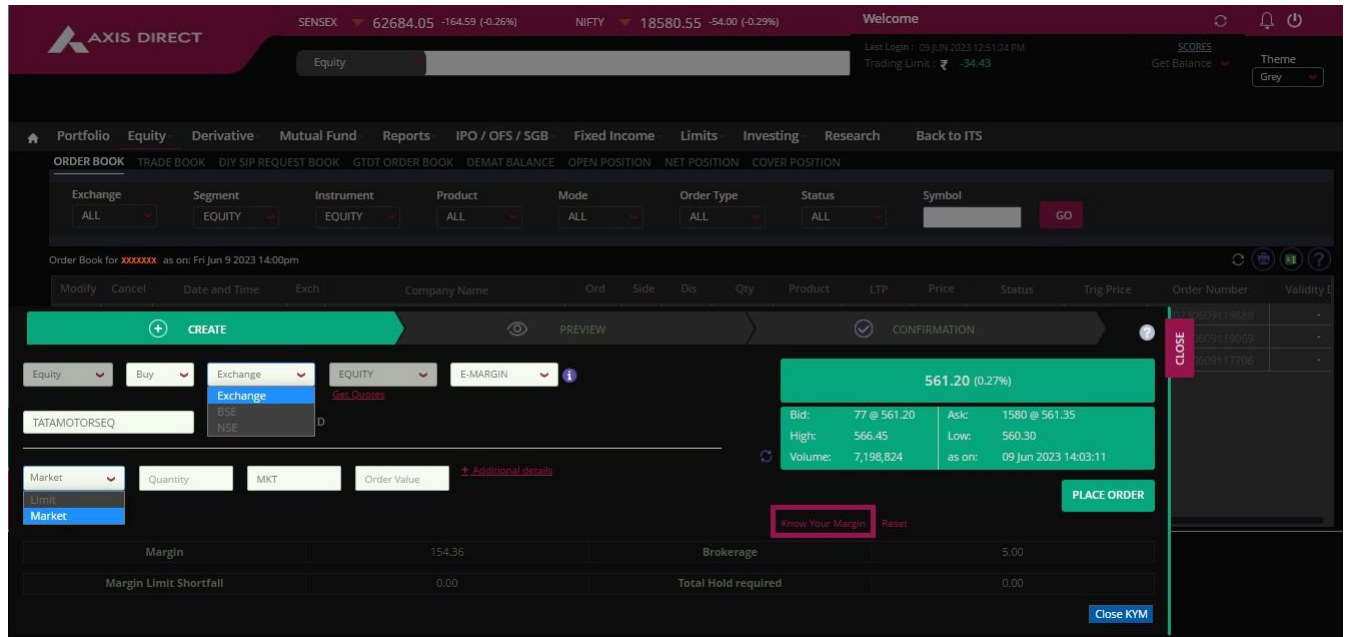
**Step 2:** Select '**E-Margin**' under the '**BUY**' column



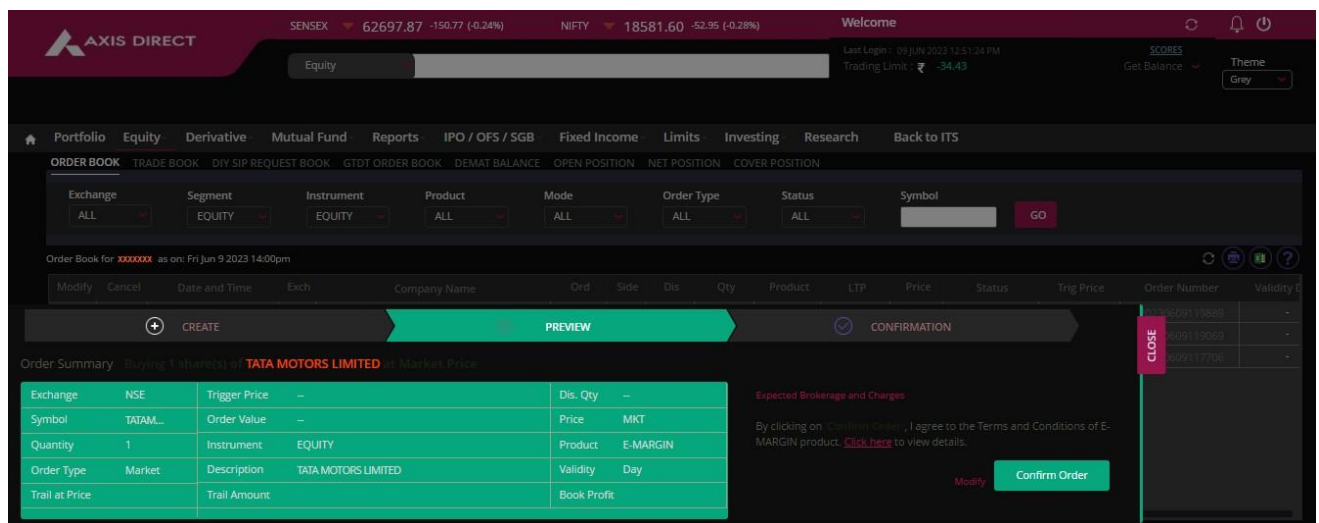
BUY	SELL	RESEARCH	REPORTS	TOOLS	BUY BACK
Cash	Cash	Fundamental Calls	Order Book	Charts	Dash Board
Start SIP - DIYSIP	Intraday	Technical Calls	Trade Book	Top Gainers & Losers	Order Book
Intraday	Collateral Sell		DIY SIP Request Book	Market Status	Security Limit
Cover	Encash		GTDt Order Book	Multiple Indices Enquiry	Demat Balance
<b>E-Margin</b>	GTDt (Good Till Date) Order		Demat Balance	Stock List	
GTDt (Good Till Date) Order			Open Position	DIY SIP Stock List	
			Net Position	Stock Essentials	
			Cover Position		

**Step 3:** Select the preferred ‘**Exchange**’, enter the desired scrip name, select the order type viz. **Limit/Market** and click on ‘**PLACE ORDER**’ to proceed with the order.

Click on the **Know Your Margin** link to know more about the approximate margin required.



**Step 4:** Check the order details and click on ‘**Confirm Order**’ to proceed with the order



### Step 5: Order placed

Order Status: Buying 1 shares of **TATA MOTORS LIMITED** at Market Price

Exchange	NSE	Trigger Price	--	Dis. Qty	--
Symbol	TATAM...	Order Value	--	Price	MKT
Quantity	1	Instrument	EQUITY	Product	E-MARGIN
Order Type	Market	Description	TATA MOTORS LIMITED	Validity	Day
Trail at Price		Trail Amount		Book Profit	

✓ Your Internal Order Reference Number is 20230609122686  
Status: Sent to Exchange

Click on the refresh icon next to the 'Sent to Exchange' to know the order status.

Order Status: Buying 1 shares of **TATA MOTORS LIMITED** at Market Price

Exchange	NSE	Trigger Price	--	Dis. Qty	--
Symbol	TATAM...	Order Value	--	Price	MKT
Quantity	1	Instrument	EQUITY	Product	E-MARGIN
Order Type	Market	Description	TATA MOTORS LIMITED	Validity	Day
Trail at Price		Trail Amount		Book Profit	

✓ Your Internal Order Reference Number is 20230609122686  
Status: Executed

OR

Click on 'Equity' >> 'Order Book' under the 'REPORTS' column

Order Book for xxxxxxxx as on: Fri Jun 9 2023 14:04pm

Modify	Cancel	Date and Time	Exch	Company Name	Ord	Side	Dis	Qty	Product	LTP	Price	Status	Trig Price	Order Number	Validity
-	-	09/06/2023 14:04:22	NSE	TATA MOTORS LIMITED	Market	BUY	0	1	E-MARGIN	561.00	MKT	Executed	0	20230609122686	-
-	-	09/06/2023 13:55:35	NSE	INDIAN RAILWAY FIN CORP L	Market	BUY	0	1	INTRADAY	33.20	MKT	Executed	0	20230609119889	-
-	-	09/06/2023 13:53:25	NSE	INDIAN RAILWAY FIN CORP L	Market	BUY	0	1	CASH	33.20	MKT	Executed	0	20230609119069	-
-	-	09/06/2023 13:50:27	NSE	HERO MOTOCORP LIMITED	Market	SELL	0	1	E-MARGIN	2922.50	MKT	Executed	0	20230609117706	-

