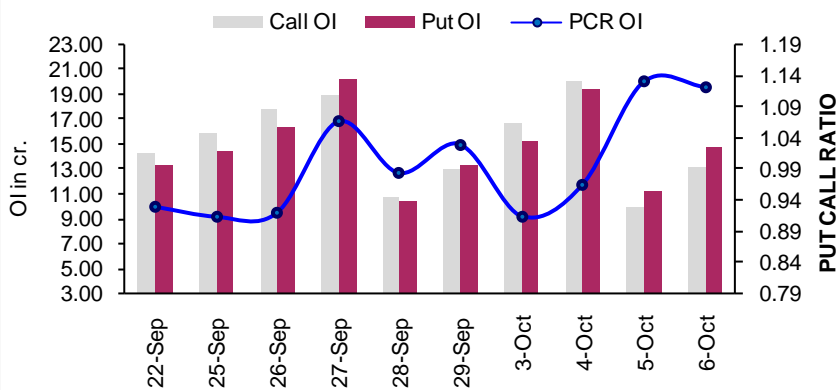
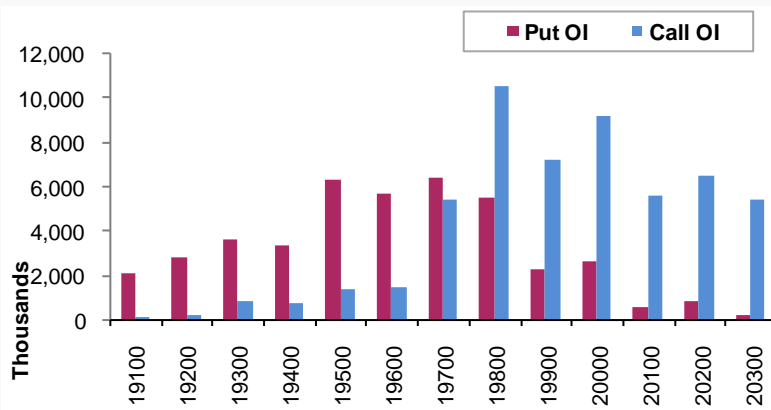


**NIFTY HIGHLIGHTS**

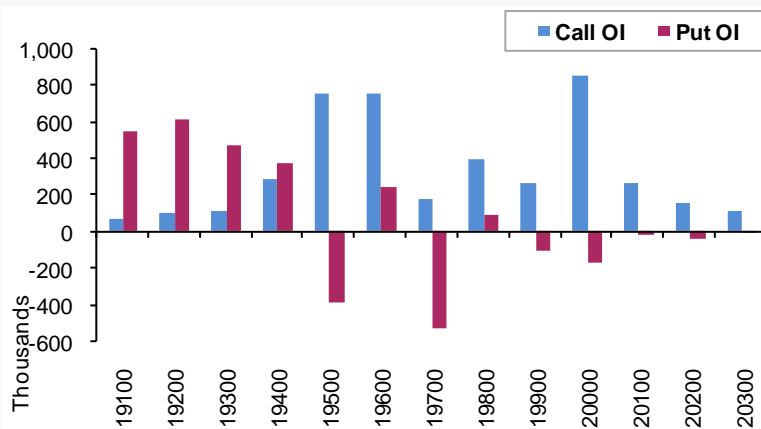
- Nifty futures of current expiry on Friday closed at 19678.5 on a negative note with **12.84% increase** in open interest and a price cut of **-0.15% (-30.5 points)** indicating **Short Build Up**.
- Nifty annualized volatility index India Vix has decreased to **10.30%** from **11.45%** down by **-10.06%**.
- Bank Nifty futures of current expiry on Friday closed at 44510.2 on a negative note with **19.05% increase** in open interest and a price cut of **-0.75% (-337.65 points)** indicating **Short Build Up**.
- The total outstanding OI in Nifty futures stands at 1,17,07,350 compared to 1,01,98,350 of previous week, while in Bank Nifty it's at 27,21,045 against 22,94,715.
- The '**Long Short Ratio**' in the index futures for FII's stands at **27 percent** compared to **28 percent** of last week indicating a very marginal **Unwinding in LONG POSITIONS**.

**Nifty PCR OI**


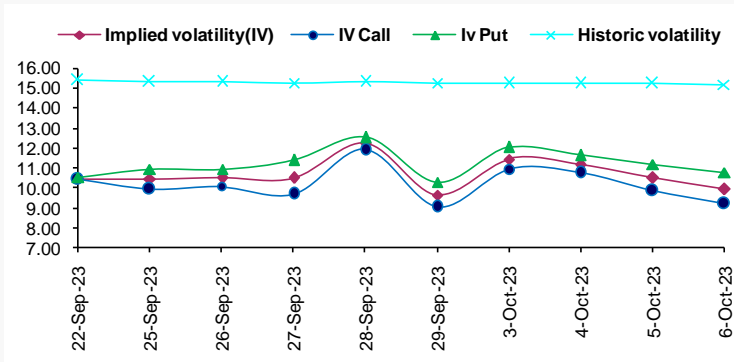
- **PCR OI during the week has made a high of 1.13 & low of 0.91 and closed on weekly basis at 1.12 levels compared to 1.03 of last week.**
- PCR OI currently is at 1.12 level which is above the median line and shows that market participants have added more numbers of PUT options compared to CALL options in the week indicating that Nifty may trade with caution at higher levels; while the market sentiment is likely to be sanguine.

**Open Interest Analysis**


- Options Built up Shows that for now Nifty has strong support at 19,500 followed by 19,600, 19,400 and resistance at 19,800 levels followed by 19,900 & 20,000.
- As per monthly option data 20,500, 20,000 & 21,000 strike CALL has high open Interest concentration ; while in Put strikes 19,500 followed by 19,000 & 19,600 strike has high open interest concentration which suggests that Nifty is likely to trade between these levels of 20,000 on upside & 19,500 on downside for the coming week & **pivotal level will be 19,600 & 19,800.**

**Change in Open Interest**


- This week major addition in monthly expiry was seen on the **PUT** front in 19,100, 19,200 and 19,000 strike adding 5.48 Lac, 6.14 Lac and 10.66 Lac shares in OI respectively; while there were unwinding of 3.97 Lac & 5.29 Lac shares witnessed at 19,500 & 19,700 strike .
- This week major addition in monthly expiry was seen on the **CALL** front in 19,500, 19,600 and 20,000 strike adding 7.60 Lac, 7.61 Lac and 8.61 Lac shares in OI respectively; while there was no significant unwinding seen at any strike.

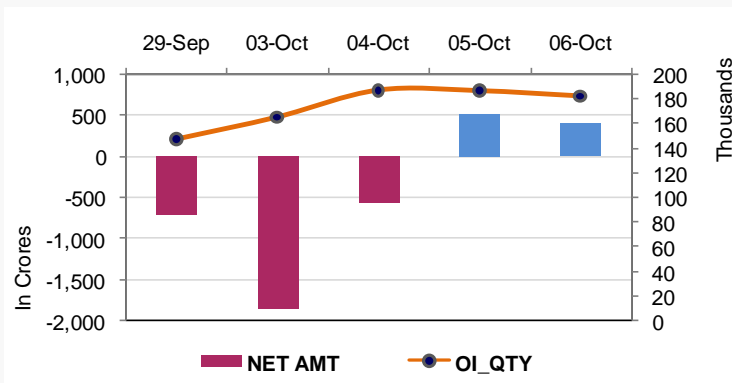
**Volatility Analysis**


- **IV DIFFERENTIAL between CALL and PUT has marginally INCREASED with decrease in IVs from last week's level indicating that Nifty will likely to trade range bound with mixed bias.**
- Call IV's is currently at 9.2% versus 11.92% compared to last week, while Put IV's is at 10.8% versus 12.57% compared to last week.
- Implied Volatility of option for the current series is at 9.95% in contrast to 9.66% of last week, while in the coming week it's likely to be **Flat-to-Increasing**.

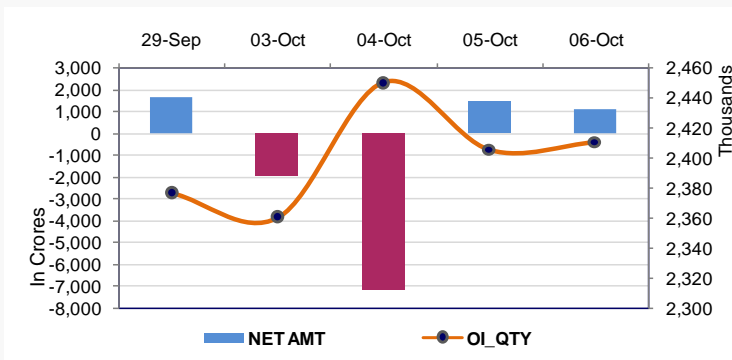
**Weekly Participant Wise Open Interest**

Participant	FUT IDX Long (contracts)	Net Chg	FUT IDX Short (contracts)	Net Chg
Client	2,58,838	<b>36,285</b>	1,75,478	<b>26,437</b>
DII	53,296	<b>2,619</b>	73,726	<b>4,504</b>
FII	49,152	<b>7,988</b>	1,33,520	<b>27,051</b>
Pro	61,532	<b>11,951</b>	40,094	<b>851</b>

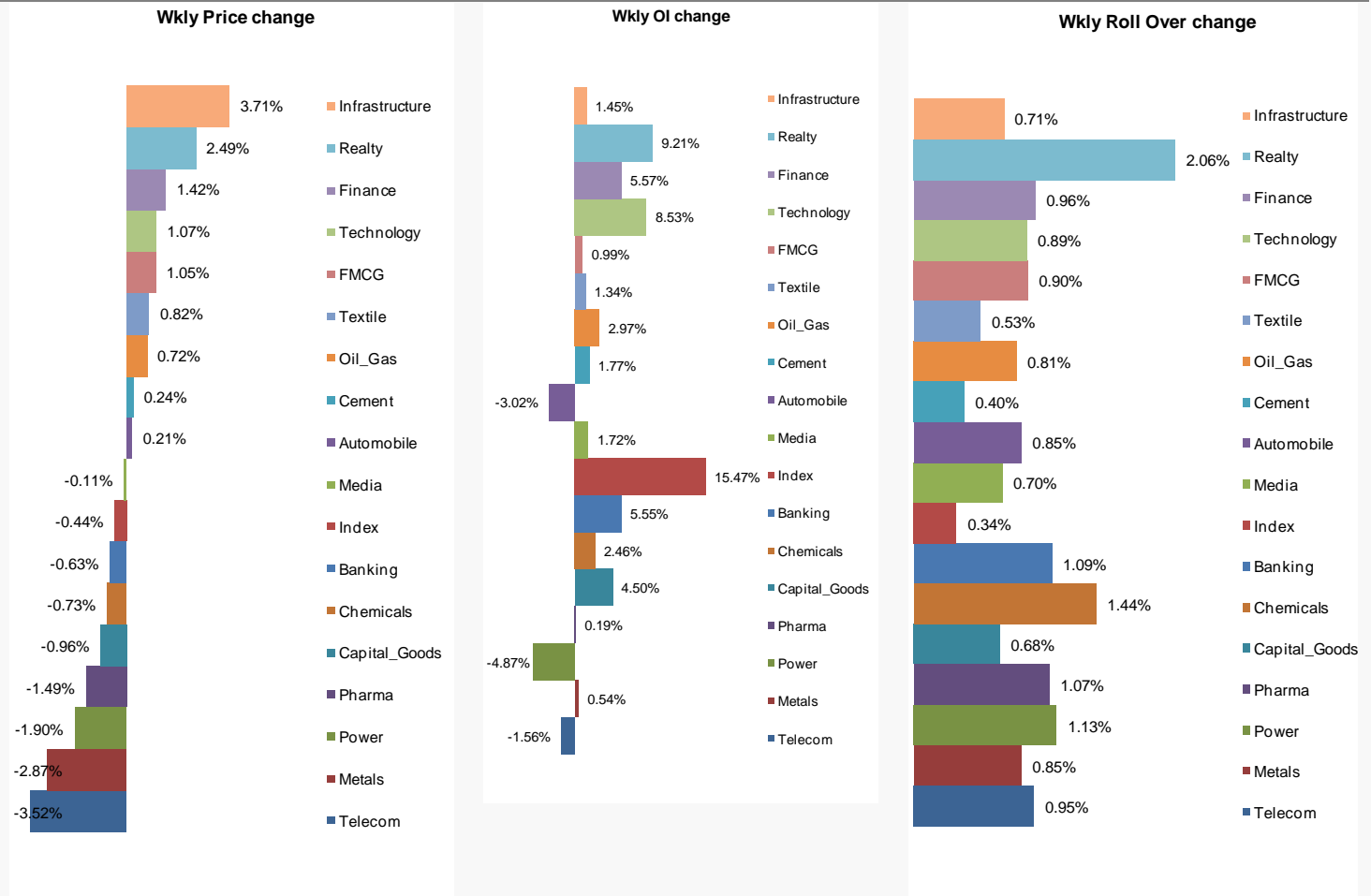
Participant	FUT STK Long (contracts)	Net Chg	FUT STK Short (contracts)	Net Chg
Client	17,14,148	<b>96,200</b>	2,22,990	<b>45,863</b>
DII	1,40,223	<b>1,023</b>	17,42,722	<b>11,526</b>
FII	11,02,634	<b>-22,749</b>	13,07,967	<b>56,676</b>
Pro	4,56,136	<b>45,937</b>	1,39,462	<b>6,346</b>

**FII Index Futures**


- Last week FII's Total, No. of contracts in INDEX FUTURES concluded at 1,82,672 compared to 1,47,633 of last week adding 35,039 contracts, in which Nifty futures added 23,802 contracts and Bank Nifty futures added 10,791 contracts.
- The total open interest position of FII's in Index Futures is at Rs 15,154 which on weekly basis has increased by Rs 3,044 Crs.
- Last week FII's, No. of contracts in NIFTY OPTIONS concluded at 13,26,775 compared to 13,71,234 of last week which has reduced by -44,459 contracts and in Bank Nifty it has reduced by -86,376 contracts and ended the week with 11,70,924 contracts against 12,57,300 of last week.

**FII Stock Futures**


- Last week FII's, No. of contracts in STOCK FUTURES concluded at 24,10,601 compared to 23,76,674 of last week adding 33,927 contracts.
- The total open interest position of FII's in Stock Futures is at Rs 1,89,792 which on weekly basis have increased by Rs 1,493 Crs.
- Last week FII's, No. of contracts in STOCK OPTIONS concluded at 1,66,619 compared to 1,05,545 of last week adding 61,074 contracts.

**Weekly Price Change**
**Weekly OI Change**
**Weekly Roll Over Change**

**Weekly Open Interest Gainer**

Script ID	Price	% Chg	OI Futures	% Chg
MGL	1119.4	8.36%	2666400	44.29%
DALBHARAT	2232.8	-7.62%	1838500	37.92%
MARICO	539.85	-4.40%	13382400	31.15%
SIEMENS	3550.65	-3.87%	2352075	28.21%
ESCORTS	3209.65	0.17%	1977525	21.80%

**Weekly Open Interest Loser**

Script ID	Price	% Chg	OI Futures	% Chg
MCX	2043.45	-0.34%	3070400	-14.45%
EICHERMOT	3464.8	-0.30%	3228225	-11.36%
MARUTI	10318	-3.18%	2603900	-9.55%
HINDUNILVR	2507.8	1.54%	9145500	-9.36%
FEDERALBNK	146.8	-0.64%	111665000	-8.05%

**Weekly Price Gainer**

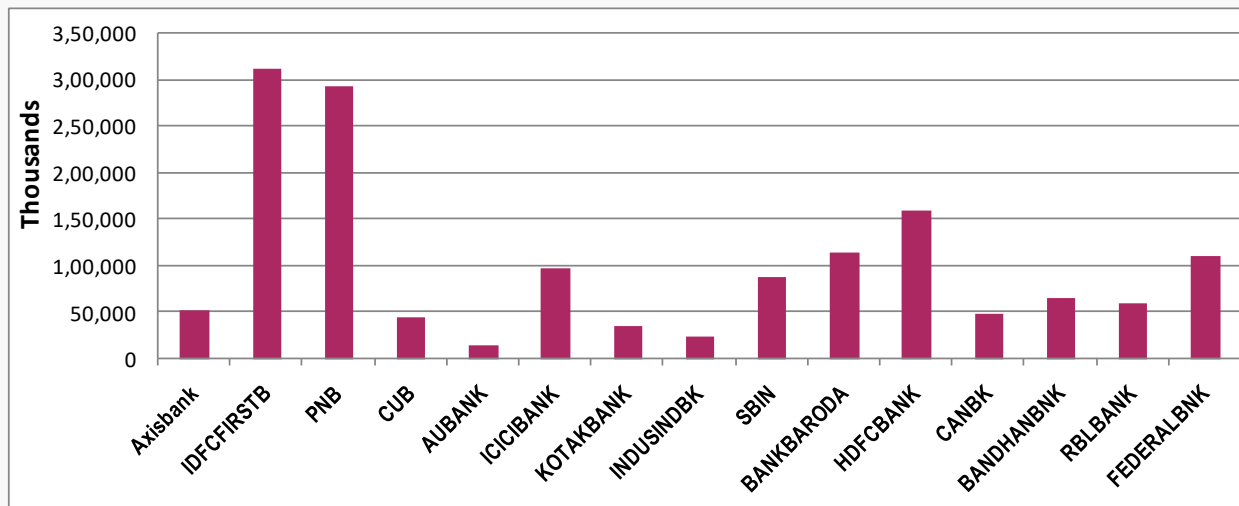
Script ID	Price	% Chg	OI Futures	% Chg
MGL	1119.4	8.36%	2666400	44.29%
GODREJPROP	1683.45	7.60%	4096875	7.09%
INDIGO	2547.25	6.58%	4547700	-4.70%
BSOFT	515.25	5.89%	8130000	1.91%
BAJAJFINSV	1638.35	5.65%	11381000	12.77%

**Weekly Price Loser**

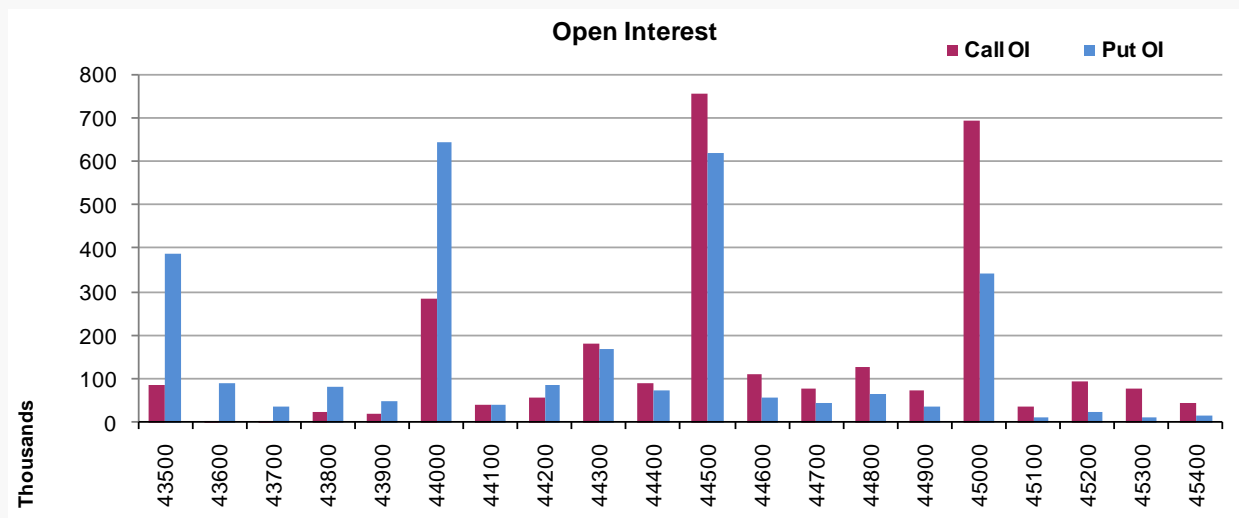
Script ID	Price	% Chg	OI Futures	% Chg
DALBHARAT	2232.8	-7.62%	1838500	37.92%
IBULHSGFIN	173.55	-7.12%	59231400	1.11%
GLENMARK	797.7	-7.06%	8247600	-0.52%
IDEA	11	-6.38%	1536960000	7.59%
INDUSTOWER	181.3	-5.94%	86417800	-0.31%

- During the week Stocks which witnessed significant OI addition along with price gains are **MGL, ESCORTS, COROMANDEL and LAURUSLABS.**
- During the week Stocks which witnessed significant OI addition along with decrease in price are **DALBHARAT, MARICO, SIEMENS and SHRIRAMFIN.**

### Stock wise Open Interest Distribution in Banking Sector



### Bank Nifty Strike wise open interest distribution



Bank Nifty as per monthly expiry has a strong support at 43,000; as 43,000 **Put strike** is having high OI concentration followed by 44,500 & 44,000; while on the **Call front** 46,000CE strike has high OI concentration indicating strong resistance level followed by 45,500 & 45,000. **The pivotal level for BANKNIFTY is 44,500.**

#### Weekly Open Interest Gainer

Script ID	Price	% Chg	OI Futures	% Chg
IDFCFIRSTB	90.95	-3.65%	31,20,60,000	15.34%
PNB	76.95	-4.59%	29,30,40,000	14.28%
CUB	129.60	1.65%	4,55,60,000	12.49%

#### Weekly Open Interest Loser

Script ID	Price	% Chg	OI Futures	% Chg
FEDERALBNK	146.80	-0.64%	11,16,65,000	-8.05%
RBLBANK	248.10	-2.15%	5,92,85,000	-3.97%
BANDHANBNK	253.90	0.59%	6,61,00,000	-1.97%

#### Weekly Price Gainer

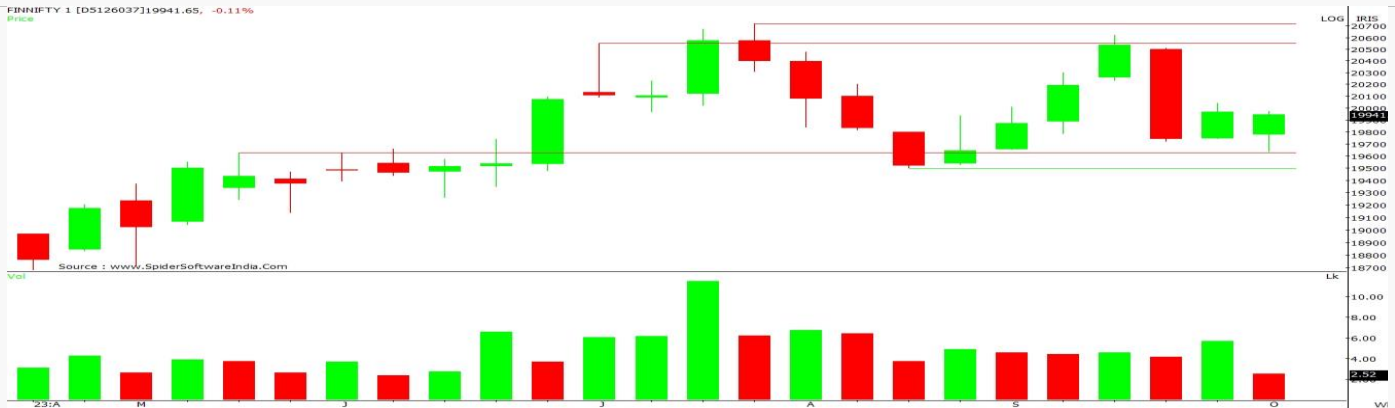
Script ID	Price	% Chg	OI Futures	% Chg
CUB	129.60	1.65%	4,55,60,000	12.49%
BANDHANBNK	253.90	0.59%	6,61,00,000	-1.97%
AUBANK	715.05	0.29%	1,46,73,000	11.33%

#### Weekly Price Loser

Script ID	Price	% Chg	OI Futures	% Chg
PNB	76.95	-4.59%	29,30,40,000	14.28%
IDFCFIRSTB	90.95	-3.65%	31,20,60,000	15.34%
RBLBANK	248.10	-2.15%	5,92,85,000	-3.97%

INDEX	Since Inception			INDEX	Weekly Data		
	11-Jan-21	06-Oct-23	% Diff.		29-Sep-23	06-Oct-23	% Diff.
FINNIFTY	15,676.25	19,941.65	27.21%	FINNIFTY	19,964.35	19,941.65	-0.1%
FUTURE PRICE	77,880	57,960	-25.58%	FUTURE PRICE	53,360	57,960	8.62%
OPEN INTEREST				OPEN INTEREST			

On the weekly basis FINNIFTY futures have seen a price Decrement to the tune of 0.11% with a Increase in Open Interest by 8.62% indicating Short Build Up.



### COMPARISION TABLE

SR.NO	STOCKS	CMP	CURRENT OI	WEEKLY PRICE DIFF	WEEKLY OI DIFF	OI INT
1	AXISBANK	1006	51959375	-3.47%	19.52%	SB
2	BAJAJFINSV	1638.35	11381000	5.65%	12.77%	LB
3	BAJFINANCE	8177.85	4362250	4.26%	7.05%	LB
4	CHOLAFIN	1224.35	14207500	0.09%	0.80%	LB
5	HDFCAMC	2727.65	4480500	3.35%	-2.35%	SC
6	HDFCBANK	1537.6	159778300	0.06%	4.01%	LB
7	HDFCLIFE	633.85	16207400	-0.95%	0.55%	SB
8	ICICIBANK	947.15	98669200	-0.96%	8.68%	SB
9	ICICIGI	1322.7	2946500	0.80%	2.06%	LB
10	ICICIPRULI	562	6832500	-1.13%	-1.24%	LU
11	IEX	134.05	61331250	0.83%	0.07%	LB
12	KOTAKBANK	1748.9	35074400	0.18%	7.63%	LB
13	MUTHOOTFIN	1206.5	7022400	-3.49%	11.18%	SB
14	PFC	247.1	69719000	-2.54%	8.53%	SB
15	RECLTD	286.65	61824000	-0.90%	3.65%	SB
16	SBICARD	801.95	9676800	0.95%	4.92%	LB
17	SBILIFE	1286.4	7836750	-2.01%	5.66%	SB
18	SBIN	595.35	89076000	-0.89%	5.63%	SB
19	SHRIRAMFIN	1855.45	8652000	0.00%	0.00%	LU

1) Buy PFC 250 CE in range :-> 7.3 – 5.5 SL 3.5 Target 11 & 18.

2) Buy SBICARDS 800 CE Future in range :-> 19 – 15 SL 12.5 Target 24 & 29.

**Disclosures:**

The following Disclosures are being made in compliance with the SEBI Research Analyst Regulations 2014 (herein after referred to as the Regulations).

1. Axis Securities Ltd. (ASL) is a SEBI Registered Research Analyst having registration no. INH000000297. ASL, the Research Entity (RE) as defined in the Regulations, is engaged in the business of providing Stock broking services, Depository participant services & distribution of various financial products. ASL is a subsidiary company of Axis Bank Ltd. Axis Bank Ltd. is a listed public company and one of India's largest private sector bank and has its various subsidiaries engaged in businesses of Asset management, NBFC, Merchant Banking, Trusteeship, Venture Capital, Stock Broking, the details in respect of which are available on [www.axisbank.com](http://www.axisbank.com).
2. ASL is registered with the Securities & Exchange Board of India (SEBI) for its stock broking & Depository participant business activities and with the Association of Mutual Funds of India (AMFI) for distribution of financial products and also registered with IRDA as a corporate agent for insurance business activity.
3. ASL has no material adverse disciplinary history as on the date of publication of this report.
4. I/We, authors (Research team) and the name/s subscribed to this report, hereby certify that all of the views expressed in this research report accurately reflect my/our views about the subject issuer(s) or securities. I/We (Research Analyst) also certify that no part of my/our compensation was, is, or will be directly or indirectly related to the specific recommendation(s) or view(s) in this report. I/we or my/our relative or ASL or its Associate does not have any financial interest in the subject company. Also I/we or my/our relative or ASL or its Associates may have beneficial ownership of 1% or more in the subject company at the end of the month immediately preceding the date of publication of the Research Report. Since associates of ASL are engaged in various financial service businesses, they might have financial interests or beneficial ownership in various companies including the subject company/companies mentioned in this report. I/we or my/our relative or ASL or its associate does not have any material conflict of interest. I/we have not served as director / officer, etc. in the subject company in the last 12-month period.

**Research Team**

Sr. No	Name	Designation	E-mail
1	Rajesh Palviya	Technical & Derivative Analyst - (Head)	rajesh.palviya@axissecurities.in
2	Rahil Vora	Derivative Analyst	rahil.vora@axissecurities.in
3	HemangGor	Derivative Analyst	hemang.gor@axissecurities.in

5. ASL or its Associates has not received any compensation from the subject company in the past twelve months. I/We or ASL or its Associate has not been engaged in market making activity for the subject company.
6. In the last 12-month period ending on the last day of the month immediately preceding the date of publication of this research report, ASL or any of its associates may have:
  - i. Received compensation for investment banking, merchant banking or stock broking services or for any other services from the subject company of this research report and / or;
  - ii. Managed or co-managed public offering of the securities from the subject company of this research report and / or;
  - iii. Received compensation for products or services other than investment banking, merchant banking or stock broking services from the subject company of this research report;

ASL or any of its associates have not received compensation or other benefits from the subject company of this research report or any other third-party in connection with this report.

**Term& Conditions:**

This report has been prepared by ASL and is meant for sole use by the recipient and not for circulation. The report and information contained herein is strictly confidential and may not be altered in any way, transmitted to, copied or distributed, in part or in whole, to any other person or to the media or reproduced in any form, without prior written consent of ASL. The report is based on the facts, figures and information that are considered true, correct, reliable and accurate. The intent of this report is not recommendatory in nature. The information is obtained from publicly available media or other sources believed to be reliable. Such information has not been independently verified and no guaranty, representation of warranty, express or implied, is made as to its accuracy, completeness or correctness. All such information and opinions are subject to change without notice. The report is prepared solely for informational purpose and does not constitute an offer document or solicitation of offer to buy or sell or subscribe for securities or other financial instruments for the clients. Though disseminated to all the customers simultaneously, not all customers may receive this report at the same time. ASL will not treat recipients as customers by virtue of their receiving this report.

**Disclaimer:**

Nothing in this report constitutes investment, legal, accounting and tax advice or a representation that any investment or strategy is suitable or appropriate to the recipient's specific circumstances. The securities and strategies discussed and opinions expressed, if any, in this report may not be suitable for all investors, who must make their own investment decisions, based on their own investment objectives, financial positions and needs of specific recipient.

This report may not be taken in substitution for the exercise of independent judgment by any recipient. Each recipient of this report should make such investigations as it deems necessary to arrive at an independent evaluation of an investment in the securities of companies referred to in this report (including the merits and risks involved), and should consult its own advisors to determine the merits and risks of such an investment. Certain transactions, including those involving futures, options and other derivatives as well as non-investment grade securities involve substantial risk and are not suitable for all investors. ASL, its directors, analysts or employees do not take any responsibility, financial or otherwise, of the losses or the damages sustained due to the investments made or any action taken on basis of this report, including but not restricted to, fluctuation in the prices of shares and bonds, changes in the currency rates, diminution in the NAVs, reduction in the dividend or income, etc. Past performance is not necessarily a guide to future performance. Investors are advised necessarily a guide to future performance. Investors are advised to see Risk Disclosure Document to understand the risks associated before investing in the securities markets. Actual results may differ materially from those set forth in projections. Forward-looking statements are not predictions and may be subject to change without notice.

ASL and its affiliated companies, their directors and employees may; (a) from time to time, have long or short position(s) in, and buy or sell the securities of the company(ies) mentioned herein or (b) be engaged in any other transaction involving such securities or earn brokerage or other compensation or act as a market maker in the financial instruments of the company(ies) discussed herein or act as an advisor or investment banker, lender/borrower to such company(ies) or may have any other potential conflict of interests with respect to any recommendation and other related information and opinions. Each of these entities functions as a separate, distinct and independent of each other. The recipient should take this into account before interpreting this document.

ASL and / or its affiliates do and seek to do business including investment banking with companies covered in its research reports. As a result, the recipients of this report should be aware that ASL may have a potential conflict of interest that may affect the objectivity of this report. Compensation of Research Analysts is not based on any specific merchant banking, investment banking or brokerage service transactions. ASL may have issued other reports that are inconsistent with and reach different conclusion from the information presented in this report.

Neither this report nor any copy of it may be taken or transmitted into the United State (to U.S. Persons), Canada, or Japan or distributed, directly or indirectly, in the United States or Canada or distributed or redistributed in Japan or to any resident thereof. If this report is inadvertently sent or has reached any individual in such country, especially, USA, the same may be ignored and brought to the attention of the sender. This report is not directed or intended for distribution to, or use by, any person or entity who is a citizen or resident of or located in any locality, state, country or other jurisdiction, where such distribution, publication, availability or use would be contrary to law, regulation or which would subject ASL to any registration or licensing requirement within such jurisdiction. The securities described herein may or may not be eligible for sale in all jurisdictions or to certain category of investors.

The Disclosures of Interest Statement incorporated in this document is provided solely to enhance the transparency and should not be treated as endorsement of the views expressed in the report. The Company reserves the right to make modifications and alternations to this document as may be required from time to time without any prior notice. The views expressed are those of the analyst(s) and the Company may or may not subscribe to all the views expressed therein.

**Copyright in this document vests with Axis Securities Limited.**

Axis Securities Ltd, Unit No.1001, 10th Floor, Level-6, Q2 Building, Aurum, Q Parc, Plot No. 4/1, TTC, Thane – Belapur Road, Ghansoli, Navi Mumbai. – 400 710. Compliance Officer: Anand Shaha, Email: [compliance.officer@axisdirect.in](mailto:compliance.officer@axisdirect.in), Tel No: 022-42671582. SEBI-Portfolio Manager  
Reg. No. INP000000654.