

PRECIOUS METALS MARKET WATCH

Precious Metals	Close	% Chng
MCX Gold	61780	0.45%
COMEX Gold \$	2021	0.75%
MCX Silver	71591	0.19%
COMEX Silver \$	22.807	0.61%

BASE METALS MARKET WATCH

Base Metals	Close	% Chng
MCX Aluminium	197.5	-0.63%
LME Aluminium \$	2171	-0.37%
MCX Copper	713.1	-0.03%
LME Copper \$	8318	0.41%
MCX Lead	180.25	-0.08%
LME Lead \$	2078	0.92%
LME Nickel \$	16,161	0.40%
MCX Zinc	219.4	-0.43%
LME Zinc \$	2,469	0.04%

ENERGY MARKET WATCH

Energy Market	Close	% Chng
MCX Crude	6142	2.85%
NYMEX Crude \$	73.95	2.03%
MCX Natural Gas	225.1	-4.82%
NYMEX Natural Gas	2.704	-6.34%

FOREX & WORLD MARKET WATCH

Forex & World	Close	% Chng
Nifty	21462.25	-0.51%
USDINR	83.108	-0.02%
EURUSD	1.0886	-0.09%
GBPUSD	1.2704	0.12%
Dollar Index	103.373	0.11%
Dow Jones	37468.61	0.54%

INVENTORY WATCH

Base metals	Previous	Daily Change	Total
Aluminium	4,73,575	-1,375	4,73,575
Copper	1,65,600	3,250	1,65,600
Lead	66,175	-1,725	66,175
Nickel	45,552	-72	45,552
Zinc	2,78,625	-1,575	2,78,625

- Gold prices set for a weekly drop due to strong dollar index
- Oil prices rallied in the last session
- Copper prices recover in the morning session

Bullion

Gold prices were set on Friday for their worst week in more than a month, as the dollar and Treasury yields strengthened after U.S. central bankers pushed back against expectations of early rate cuts amid signs of resilience in the economy.

NYMEX Oil

Crude oil and gasoline prices Thursday closed sharply higher. Thursday's better-than-expected U.S. economic news was positive for energy demand and crude prices. Also, heightened geopolitical risks in the Middle East are lifting crude prices as the U.S. military targeted 14 Houthi missile launch sites overnight in Yemen as Houthi rebels continue to attack ships in the Red Sea off Yemen's coast. Gains in crude accelerated after weekly EIA crude inventories fell more than expected.

Base Metals

Copper prices are higher in early Asian trade amid supply concerns. Low prices and a tough regulatory environment have led to mine closures across base-metal markets which is supporting Base metal prices at the lower level.

Source: Reuters, Bloomberg, Investing.com

World Key Data

	Time	Country	Data	Forecast	Previous	IMPACT
19-Jan-24	20:30:00	USD	Prelim UoM Consumer Sentiment	69.8	69.7	HIGH

Top Gainer / Loser

MCX

Commodity	Expiry Date	LTP	% Change	Commodity	Expiry Date	LTP	% Change
CRUDEOIL	16-Feb-24	6,145.0	2.33	NATGASMINI	25-Jan-24	225.7	-4.69
STEELREBAR	29-Feb-24	46,100.0	1.03	COTTONCNDY	31-Jan-24	55,120.0	-0.22
SILVERMIC	29-Feb-24	71,777.0	0.07	LEADMINI	31-Jan-24	180.1	-0.22
SILVER	05-Mar-24	71,658.0	0.06	LEAD	31-Jan-24	180.0	-0.14
GOLDM	05-Feb-24	61,825.0	0.06	NATURALGAS	25-Jan-24	225.3	-0.09

Action from Open Interest

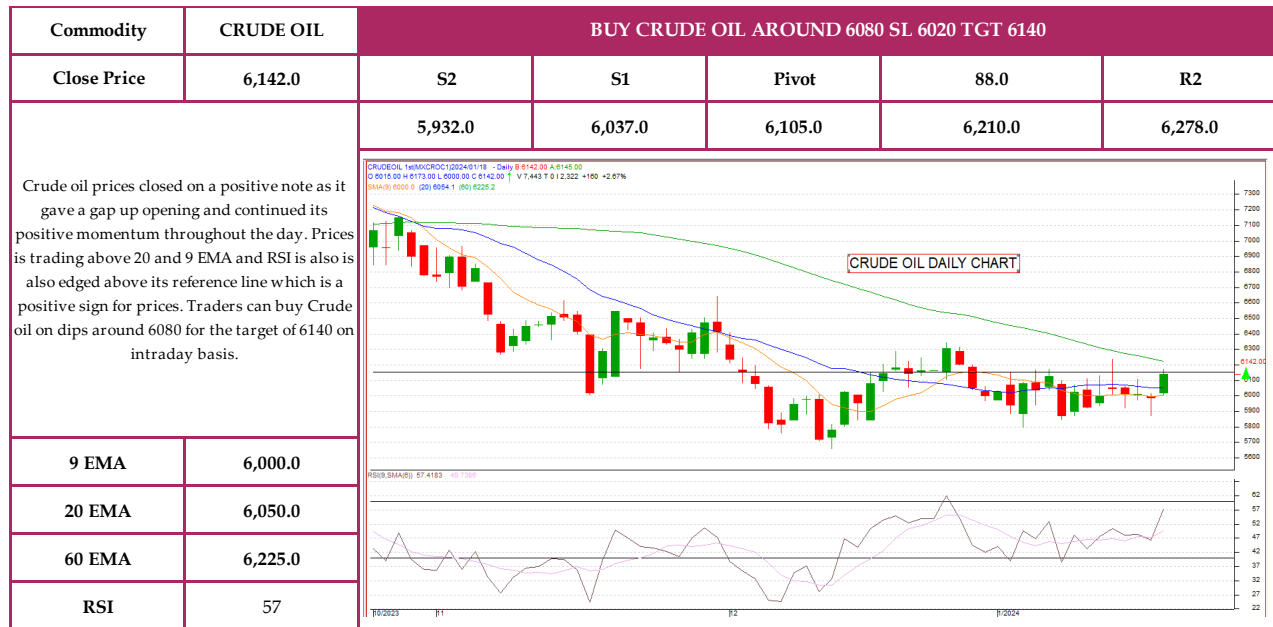
Long Buildup				Short Buildup			
Commodity	Close	% Chng in Price	% Chng in OI	Commodity	Close	% Chng in Price	% Chng in OI
SILVER 2303	71,591.0	0.19%	3.65%	NATURALGAS 1ST	225.1	-4.8%	42.5%
TURMERIC NIZAMB 1ST	13,890.0	1.17%	1.50%	ZINC 1ST	219.4	-0.4%	2.8%
Long Unwinding				Short Covering			
Commodity	Close	% Chng in Price	% Chng in OI	Commodity	Close	% Chng in Price	% Chng in OI
ALUMINIUM 1ST	197.5	-0.6%	-5.7%				
LEAD 2212	180.25	-0.1%	-10.3%				

*Data can be used for intraday only.

Long Buildup / Short Covering = Buy

Short Buildup / Long unwinding = Short Sell

Chart for the day



Daily Support/ Resistance

Exchange	Commodity	Expiry	Close	S2	S1	Pivot	R1	R2
MCX	GOLD	5-Feb-24	61,780.0	61,369.3	61,574.7	61,687.3	61,892.7	62,005.3
MCX	SILVER	5-Mar-24	71,591.0	70,968.3	71,279.7	71,459.3	71,770.7	71,950.3
MCX	CRUDEOIL	19-Jan-24	6,142.0	5,932.0	6,037.0	6,105.0	6,210.0	6,278.0
MCX	NATURALGAS	25-Jan-24	225.1	210.0	217.5	231.9	239.4	253.8
MCX	COPPER	31-Jan-24	713.1	707.8	710.5	713.2	715.9	718.6
MCX	LEAD	31-Jan-24	180.3	178.3	179.3	180.1	181.0	181.8
MCX	ZINC	31-Jan-24	219.4	217.1	218.2	219.6	220.8	222.2
MCX	ALUMINIUM	31-Jan-24	197.5	196.2	196.9	198.0	198.6	199.7
NCDEX	COTTON SEED OIL	20-Feb-24	2,667.0	2,617.7	2,642.3	2,657.7	2,682.3	2,697.7
NCDEX	CORIANDER	19-Apr-24	7,710.0	7,650.0	7,680.0	7,710.0	7,740.0	7,770.0
NCDEX	CASTOR SEED	20-Feb-24	5,683.0	5,606.3	5,644.7	5,671.3	5,709.7	5,736.3
NCDEX	GUAR GUM5MT	20-Feb-24	10,730.0	10,533.3	10,631.7	10,723.3	10,821.7	10,913.3
NCDEX	GUAR SEED	20-Feb-24	5,511.0	5,424.3	5,467.7	5,501.3	5,544.7	5,578.3
NCDEX	JEERA UNJHA	20-Feb-24	27,040.0	26,270.0	26,655.0	27,130.0	27,515.0	27,990.0
NCDEX	TURMERIC NIZAMB	19-Apr-24	13,890.0	13,519.3	13,704.7	13,827.3	14,012.7	14,135.3

Disclosures:

The following Disclosures are being made in compliance with the SEBI Research Analyst Regulations 2014 (herein after referred to as the Regulations).

1. Axis Securities Ltd. (ASL) is a SEBI Registered Research Analyst having registration no. INH000000297. ASL, the Research Entity (RE) as defined in the Regulations, is engaged in the business of providing Stock broking services, Depository participant services & distribution of various financial products. ASL is a subsidiary company of Axis Bank Ltd. Axis Bank Ltd. is a listed public company and one of India's largest private sector bank and has its various subsidiaries engaged in businesses of Asset management, NBFC, Merchant Banking, Trusteeship, Venture Capital, Stock Broking, the details in respect of which are available on www.axisbank.com.
2. ASL is registered with the Securities & Exchange Board of India (SEBI) for its stock broking & Depository participant business activities and with the Association of Mutual Funds of India (AMFI) for distribution of financial products and also registered with IRDA as a corporate agent for insurance business activity.
3. ASL has no material adverse disciplinary history as on the date of publication of this report.
4. I/We, authors (Research team) and the name/s subscribed to this report, hereby certify that all of the views expressed in this research report accurately reflect my/our views about the subject issuer(s) or securities. I/We (Research Analyst) also certify that no part of my/our compensation was, is, or will be directly or indirectly related to the specific recommendation(s) or view(s) in this report. I/we or my/our relative or ASL or its Associate does not have any financial interest in the subject company. Also I/we or my/our relative or ASL or its Associates may have beneficial ownership of 1% or more in the subject company at the end of the month immediately preceding the date of publication of the Research Report. Since associates of ASL are engaged in various financial service businesses, they might have financial interests or beneficial ownership in various companies including the subject company/companies mentioned in this report. I/we or my/our relative or ASL or its associate does not have any material conflict of interest. I/we have not served as director / officer, etc. in the subject company in the last 12-month period.

Research Team

Sr. No	Name	Designation	E-mail
1	Rajesh Palviya	SVP Research (Head Technical & Derivatives))	rajesh.palviya@axissecurities.in
2	DeveyaGagani	CommodityAnalyst	deveya.gagani@axissecurities.in
3	AmithkumarMadiwale	CommodityAnalyst	amithkumar.madiwale@axissecurities.in

5. ASL or its Associates has not received any compensation from the subject company in the past twelve months. I/We or ASL or its Associate has not been engaged in market making activity for the subject company.
6. In the last 12-month period ending on the last day of the month immediately preceding the date of publication of this research report, ASL or any of its associates may have:
 - i. Received compensation for investment banking, merchant banking or stock broking services or for any other services from the subject company of this research report and / or;
 - ii. Managed or co-managed public offering of the securities from the subject company of this research report and / or;
 - iii. Received compensation for products or services other than investment banking, merchant banking or stock broking services from the subject company of this research report;

ASL or any of its associates have not received compensation or other benefits from the subject company of this research report or any other third-party in connection with this report.

Term& Conditions:

This report has been prepared by ASL and is meant for sole use by the recipient and not for circulation. The report and information contained herein is strictly confidential and may not be altered in any way, transmitted to, copied or distributed, in part or in whole, to any other person or to the media or reproduced in any form, without prior written consent of ASL. The report is based on the facts, figures and information that are considered true, correct, reliable and accurate. The intent of this report is not recommendatory in nature. The information is obtained from publicly available media or other sources believed to be reliable. Such information has not been independently verified and no guaranty, representation of warranty, express or implied, is made as to its accuracy, completeness or correctness. All such information and opinions are subject to change without notice. The report is prepared solely for informational purpose and does not constitute an offer document or solicitation of offer to buy or sell or subscribe for securities or other financial instruments for the clients. Though disseminated to all the customers simultaneously, not all customers may receive this report at the same time. ASL will not treat recipients as customers by virtue of their receiving this report.

Disclaimer:

Nothing in this report constitutes investment, legal, accounting and tax advice or a representation that any investment or strategy is suitable or appropriate to the recipient's specific circumstances. The securities and strategies discussed and opinions expressed, if any, in this report may not be suitable for all investors, who must make their own investment decisions, based on their own investment objectives, financial positions and needs of specific recipient.

This report may not be taken in substitution for the exercise of independent judgment by any recipient. Each recipient of this report should make such investigations as it deems necessary to arrive at an independent evaluation of an investment in the securities of companies referred to in this report (including the merits and risks involved), and should consult its own advisors to determine the merits and risks of such an investment. Certain transactions, including those involving futures, options and other derivatives as well as non-investment grade securities involve substantial risk and are not suitable for all investors. ASL, its directors, analysts or employees do not take any responsibility, financial or otherwise, of the losses or the damages sustained due to the investments made or any action taken on basis of this report, including but not restricted to, fluctuation in the prices of shares and bonds, changes in the currency rates, diminution in the NAVs, reduction in the dividend or income, etc. Past performance is not necessarily a guide to future performance. Investors are advised necessarily a guide to future performance. Investors are advised to see Risk Disclosure Document to understand the risks associated before investing in the securities markets. Actual results may differ materially from those set forth in projections. Forward-looking statements are not predictions and may be subject to change without notice.

ASL and its affiliated companies, their directors and employees may; (a) from time to time, have long or short position(s) in, and buy or sell the securities of the company(ies) mentioned herein or (b) be engaged in any other transaction involving such securities or earn brokerage or other compensation or act as a market maker in the financial instruments of the company(ies) discussed herein or act as an advisor or investment banker, lender/borrower to such company(ies) or may have any other potential conflict of interests with respect to any recommendation and other related information and opinions. Each of these entities functions as a separate, distinct and independent of each other. The recipient should take this into account before interpreting this document.

ASL and / or its affiliates do and seek to do business including investment banking with companies covered in its research reports. As a result, the recipients of this report should be aware that ASL may have a potential conflict of interest that may affect the objectivity of this report. Compensation of Research Analysts is not based on any specific merchant banking, investment banking or brokerage service transactions. ASL may have issued other reports that are inconsistent with and reach different conclusion from the information presented in this report.

Neither this report nor any copy of it may be taken or transmitted into the United State (to U.S. Persons), Canada, or Japan or distributed, directly or indirectly, in the United States or Canada or distributed or redistributed in Japan or to any resident thereof. If this report is inadvertently sent or has reached any individual in such country, especially, USA, the same may be ignored and brought to the attention of the sender. This report is not directed or intended for distribution to, or use by, any person or entity who is a citizen or resident of or located in any locality, state, country or other jurisdiction, where such distribution, publication, availability or use would be contrary to law, regulation or which would subject ASL to any registration or licensing requirement within such jurisdiction. The securities described herein may or may not be eligible for sale in all jurisdictions or to certain category of investors.

The Disclosures of Interest Statement incorporated in this document is provided solely to enhance the transparency and should not be treated as endorsement of the views expressed in the report. The Company reserves the right to make modifications and alternations to this document as may be required from time to time without any prior notice. The views expressed are those of the analyst(s) and the Company may or may not subscribe to all the views expressed therein.

Copyright in this document vests with Axis Securities Limited.

Axis Securities Limited, SEBI Single Reg. No.- NSE, BSE & MSEI – INZ000161633, ARN No. 64610, CDSL-IN-DP-CDSL-693-2013, SEBI-Research Analyst Reg. No. INH 000000297, SEBI Portfolio Manager Reg. No.- INP000000654, Main/Dealing off.- Unit No. 2, Phoenix Market City, 15, LBS Road, Near Kamani Junction, Kurla (west), Mumbai-400070, Tel No. – 022 40508080 / 022 61480808, Reg. off.- Axis House, 8th Floor, Wadia International Centre, PandurangBudhkar Marg, Worli, Mumbai – 400 025. Compliance Officer: AnandShaha, E-Mail ID: compliance.officer@axisdirect.in, Tel No: 022-42671582.