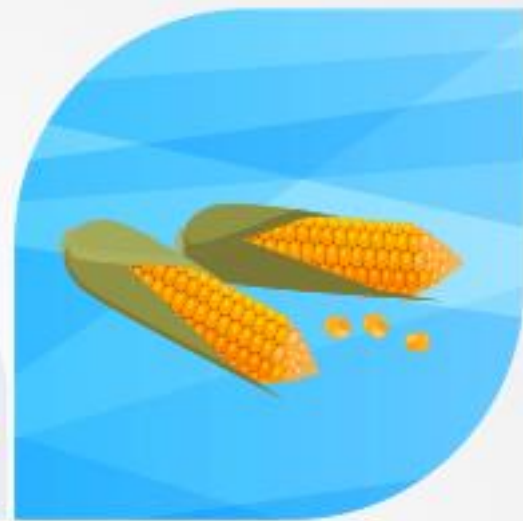


# COMMODITY SNAP SHOT



21-Sept-18

PRECIOUS METALS MARKET WATCH

Precious Metals	Close	% Chng
MCX Gold	30599	-0.09%
COMEX Gold \$	1212	0.66%
MCX Silver	37259	-0.17%
COMEX Silver \$	14.355	1.65%

BASE METALS MARKET WATCH

Base Metals	Close	% Chng
MCX Aluminium	145.8	0.97%
LME Aluminium \$	2055	1.13%
MCX Copper	438.85	0.29%
LME Copper \$	6116	0.43%
MCX Lead	143.9	-0.96%
LME Lead \$	2010	-2.66%
MCX Nickel	906.9	1.07%
LME Nickel \$	12660	2.37%
MCX Zinc	177	1.38%
LME Zinc \$	2460	3.75%

ENERGY MARKET WATCH

Energy Market	Close	% Chng
MCX Crude	5063	-0.71%
NYMEX Crude \$	70.19	0.95%
MCX Natural Gas	214	1.90%
MYMEX Natural Gas	2.96	1.06%

FOREX & WORLD MARKET WATCH

Forex & World	Close	% Chng
Nifty	11234.4	-0.39%
USDINR	72.01	-1.32%
EURUSD	1.178	1.00%
GBPUSD	1.327	0.95%
Dollar Index	93.89	-0.79%
Dow Jones	26656.98	1.56%

INVENTORY WATCH

Base metals	Previous	Daily Change	Total
Aluminium	10,35,525	-4,425	10,31,100
Copper	2,25,861	-2600	2,23,261
Lead	1,17,649	-450	1,17,199
Nickel	2,22,397	30	2,22,427
Zinc	2,10,700	-1850	2,08,850

## Market summary

- Gold hits near 1-week high as easing trade concerns hurt dollar
- London copper prices hover near 3-wk high as trade war fears ease
- Oil prices slip as Trump calls on OPEC to lower prices

**Precious metals** Gold hit its highest in nearly a week on Thursday as the dollar slumped, its safe-haven appeal lessened by fading fears over Sino-U.S. trade tensions and as investors opted for assets perceived as more risky, like stocks. The dollar hit a nine-week low against a basket of major currencies, while world stocks bounced up amid continued relief that fresh U.S. and Chinese tariffs on reciprocal imports were less harsh than originally feared.

**Base Metals** London copper hovered near a three-week peak on Thursday amid relief that the latest tariffs in the Sino-U.S. trade conflict were set at lower levels than some had feared..

**NYMEX Oil** Oil prices dipped on Friday after falling in the previous session as U.S. President Donald Trump urged OPEC to lower crude prices ahead of its meeting in Algeria this weekend. International benchmark Brent crude for November delivery (LCOc1) was down 3 cents at \$78.67 a barrel by 0207 GMT. U.S. West Texas Intermediate crude for October delivery (CLc1) fell 16 cents to \$70.16 a barrel.

## World Key Data

Date	Time	Country	Data	Forecast	Previous	Importance
-	-	-	NO MAJOR DATA	-	-	-

## Top Gainer / Loser

### MCX

Commodity	Expiry Date	LTP	% Change
NATURALGAS	25-Sep-18	214	1.9
ZINC	28-Sep-18	176.75	1.38
ZINCMINI	28-Sep-18	176.75	1.38
NICKELM	28-Sep-18	906.7	1.06
ALUMINIUM	28-Sep-18	145.9	1.04

Commodity	Expiry Date	LTP	% Change
LEAD	28-Sep-18	144.1	-0.83
LEADMINI	28-Sep-18	144.15	-0.79
CPO	28-Sep-18	586.7	-0.68
CRUDEOILM	19-Oct-18	5067	-0.61
CRUDEOIL	19-Oct-18	5069	-0.59

### NCDEX

Commodity	Expiry Date	LTP	% Change
GUARSEED10	20-Dec-18	4442	2.41
CASTOR	19-Sep-18	4719	1.70
CHANA	19-Sep-18	3901	1.56
KAPAS	30-Apr-19	1155.5	0.57
SYBEANIDR	18-Jan-19	3452	0.41

Commodity	Expiry Date	LTP	% Change
JEERAUNJHA	20-Nov-18	19820	-2.41
JEERAUNJHA	16-Oct-18	19600	-2.34
COCUDAKL	19-Sep-18	1604.5	-1.81
TMCFGRNZM	20-Nov-18	6574	-1.59
TMCFGRNZM	16-Oct-18	6484	-1.52

## Action from Open Interest

Long Buildup			
Commodity	Close	% Chng in Price	% Chng in OI
CASTOR SEED	4719	1.70%	33.33%

Short Buildup			
Commodity	Close	% Chng in Price	% Chng in OI
LEAD	143.9	-0.96%	83.93%
CRUDEOIL	5063	-0.71%	52.81%

Long Unwinding			
Commodity	Close	% Chng in Price	% Chng in OI
CORIANDER	4793	-0.15%	-47.22%
JEERA UNJHA	19390	-0.51%	-73.91%

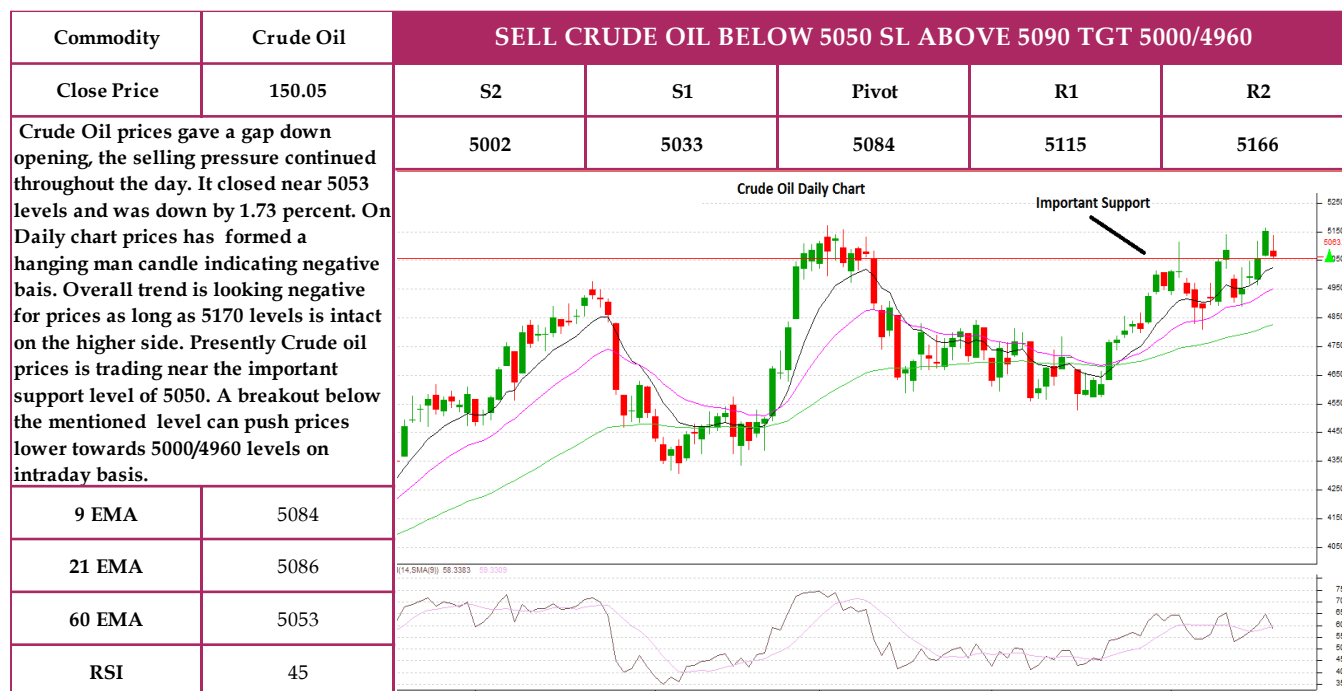
Short Covering			
Commodity	Close	% Chng in Price	% Chng in OI
COPPER	438.85	0.29%	-27.04%
ZINC	176.75	1.38%	-27.39%

\*Data can be used for intraday only.

Long Buildup / Short Covering = Buy

Short Buildup / Long unwinding = Short Sell

### Chart of the day



## Daily Support/ Resistance

Exchange	Commodity	Expiry	Close	S2	S1	Pivot	R1	R2
MCX	GOLD	5-Oct-18	30599	30502	30551	30610	30659	30718
MCX	SILVER	5-Dec-18	37259	37093	37176	37283	37366	37473
MCX	CRUDEOIL	19-Oct-18	5063	5002	5033	5084	5115	5166
MCX	NATURALGAS	25-Sep-18	214	205	210	212	217	219
MCX	COPPER	30-Nov-18	439	433	436	438	440	442
MCX	NICKEL	28-Sept-18	907	893	900	904	911	915
MCX	LEAD	28-Aug-18	144	142	143	144	145	146
MCX	ZINC	28-Aug-18	177	174	175	176	177	178
MCX	ALUMINIUM	28-Aug-18	146	144	145	146	146	147
MCX	MENTHAOIL	28-Aug-18	1712	571	1141	571	1141	571
MCX	CPO-MCX	28-Aug-18	587	584	585	587	589	591
MCX	COTTON	31-Oct-18	22270	22110	22190	22320	22400	22530
NCDEX	CHANA BIKANER	16-Oct-18	3979	3930	3955	3971	3996	4012
NCDEX	COTTON SEED OIL	16-Oct-18	1605	1584	1594	1606	1616	1627
NCDEX	CORIANDER	16-Oct-18	4793	4775	4784	4794	4803	4813
NCDEX	CASTOR SEED	16-Oct-18	4719	4616	4667	4712	4763	4808
NCDEX	GUAR GUM5MT	16-Oct-18	9368	9213	9290	9358	9435	9503
NCDEX	GUAR SEED	16-Oct-18	4316	4260	4288	4324	4352	4387
NCDEX	JEERA UNJHA	16-Oct-18	19390	19297	19343	19397	19443	19497
NCDEX	RMSEED	16-Oct-18	4126	4107	4117	4128	4138	4149
NCDEX	REF SOYAOIL	16-Oct-18	738	737	737	738	738	739
NCDEX	SOY BEAN INDORE	16-Oct-18	3297	3227	3262	3305	3340	3383

**Disclosures:**

The following Disclosures are being made in compliance with the SEBI Research Analyst Regulations 2014 (herein after referred to as the Regulations).

1. Axis Securities Ltd. (ASL) is a SEBI Registered Research Analyst having registration no. INH000000297. ASL, the Research Entity (RE) as defined in the Regulations, is engaged in the business of providing Stock broking, Commodity Broking, Depository participant, Portfolio Management services & distribution of various financial products. ASL is a subsidiary company of Axis Bank Ltd. Axis Bank Ltd. is a listed public company and one of India's largest private sector bank and has its various subsidiaries engaged in businesses of Asset management, NBFC, Merchant Banking, Trusteeship, Venture Capital, Stock Broking, the details in respect of which are available on [www.axisbank.com](http://www.axisbank.com).
2. ASL is registered with the Securities & Exchange Board of India (SEBI) for its Stock broking, Commodity broking, Depository participant, Portfolio Management, and with the Association of Mutual Funds of India (AMFI) for distribution of mutual fund products and also registered with IRDA as Composite Corporate agent for insurance business activity.
3. ASL has no material adverse disciplinary history as on the date of publication of this report.
4. I/We, authors (Research team) and the name/s subscribed to this report, hereby certify that all of the views expressed in this research report accurately reflect my/our views. I/We also certify that no part of my/our compensation was, is, or will be directly or indirectly related to the specific recommendation(s) or view(s) in this report. I/we or my/our relative or ASL does not have any financial interest or trading positions in the subject commodity. I/we or my/our relative or ASL or its associate does not have any material conflict of interest

Research Team

Sr. No	Name	Designation	E-mail
1	Rajesh Palviya	Technical & Derivative Analyst - (Head)	rajesh.palviya@axissecurities.in
2	Kiran Jani	Technical Analyst - (Commodities)	kiran.jani@axissecurities.in
3	Deveya Gaglani	Technical Analyst - (Commodities)	Deveya.gaglani@axissecurities.in

ASL or any of its associates have not received compensation or other benefits from any third-party in connection with this report.

**Term& Conditions:**

This report has been prepared by ASL and is meant for sole use by the recipient and not for circulation. The report and information contained herein is strictly confidential and may not be altered in any way, transmitted to, copied or distributed, in part or in whole, to any other person or to the media or reproduced in any form, without prior written consent of ASL. The report is based on the facts, figures and information that are considered true, correct, reliable and accurate. The intent of this report is not recommendatory in nature. The information is obtained from publicly available media or other sources believed to be reliable. Such information has not been independently verified and no guaranty, representation of warranty, express or implied, is made as to its accuracy, completeness or correctness. All such information and opinions are subject to change without notice. The report is prepared solely for informational purpose and does not constitute an offer document or solicitation of offer to buy or sell commodities or other financial instruments for the clients. Though disseminated to all the customers simultaneously, not all customers may receive this report at the same time. ASL will not treat recipients as customers by virtue of their receiving this report.

**Disclaimer:**

Nothing in this report constitutes investment, legal, accounting and tax advice or a representation that any investment or strategy is suitable or appropriate to the recipient's specific circumstances. The commodities and strategies discussed and opinions expressed, if any, in this report may not be suitable for all investors, who must make their own investment decisions, based on their own investment objectives, financial positions and needs of specific recipient.

This report may not be taken in substitution for the exercise of independent judgment by any recipient. Each recipient of this report should make such investigations as it deems necessary to arrive at an independent evaluation of an investment in the commodities referred to in this report (including the merits and risks involved), and should consult its own advisors to determine the merits and risks of such an investment. Transactions in commodities involve substantial risk and are not suitable for all investors. ASL, its directors, analysts or employees do not take any responsibility, financial or otherwise, of the losses or the damages sustained due to the investments made or any action taken on basis of this report, including but not restricted to, fluctuation in the prices of commodities, obligation to take physical delivery of the commodities, etc. Past performance is not necessarily a guide to future performance. Price and value of the commodity referred to in this report may go up or down. Investors are advised to see Risk Disclosure Document to understand the risks associated before investing in the commodities markets. Reports based on technical analysis on studying charts of a commodity's price movement and trading volume as opposed to focusing on a commodity's fundamentals and as such may not match with a report on a commodity's fundamentals. Actual results may differ materially from those set forth in projections. Forward-looking statements are not predictions and may be subject to change without notice. ASL and its affiliated companies, their directors and employees may; (a) from time to time, have long or short position(s) in, and buy or sell in the commodities mentioned herein or (b) be engaged in any other transaction involving such commodities or earn brokerage or other compensation or have any other potential conflict of interests with respect to any recommendation and other related information and opinions. Each of these entities functions as a separate, distinct and independent of each other. The recipient should take this into account before interpreting this report. Compensation of Research Analysts is not based on any specific merchant banking, investment banking or brokerage service transactions. ASL may have issued other reports that are inconsistent with and reach different conclusion from the information presented in this report. Neither this report nor any copy of it may be taken or transmitted into the United State (to U.S. Persons), Canada, or Japan or distributed, directly or indirectly, in the United States or Canada or distributed or redistributed in Japan or to any resident thereof. If this report is inadvertently sent or has reached any individual in such country, especially, USA, the same may be ignored and brought to the attention of the sender. This report is not directed or intended for distribution to, or use by, any person or entity who is a citizen or resident of or located in any locality, state, country or other jurisdiction, where such distribution, publication, availability or use would be contrary to law, regulation or which would subject ASL to any registration or licensing requirement within such jurisdiction.

The Disclosures of Interest Statement incorporated in this document is provided solely to enhance the transparency and should not be treated as endorsement of the views expressed in the report. ASL reserves the right to make modifications and alternations to this document as may be required from time to time without any prior notice. The views expressed are those of the analyst(s) and the Company may or may not subscribe to all the views expressed therein.

Copyright in this document vests with Axis Securities Limited.

Axis Securities Limited, SEBI Single Reg. No.- MCX, NCDEX, NSE, BSE, & MSEI – INZ000161633, ARN No. 64610, CDSL-IN-DP-CDSL-693-2013, SEBI-Research Analyst Reg. No. INH 000000297, SEBI Portfolio Manager Reg. No.- INP000000654, Main/Dealing off.- Unit No. 2, Phoenix Market City, 15, LBS Road, Near Kamani Junction, Kurla (west), Mumbai-400070, Tel No. – 18002100808, Reg. off.- Axis House, 8th Floor, Wadia International Centre, Pandurang Budhkar Marg, Worli, Mumbai – 400 025. Compliance Officer: Anand Shaha, E-Mail ID: compliance.officer@axisdirect.in, Tel No: 022-42671582.