

COMMODITY SNAP SHOT



12-Sept-18

PRECIOUS METALS MARKET WATCH

Precious Metals	Close	% Chng
MCX Gold	30717	0.01%
COMEX Gold \$	1202.3	0.17%
MCX Silver	37401	-0.25%
COMEX Silver \$	14.155	0.63%

BASE METALS MARKET WATCH

Base Metals	Close	% Chng
MCX Aluminium	147.45	-1.67%
LME Aluminium \$	2047	-1.54%
MCX Copper	425.55	-0.29%
LME Copper \$	5879	-0.15%
MCX Lead	142.8	-2.46%
LME Lead \$	1973	-2.38%
MCX Nickel	887.4	-1.49%
LME Nickel \$	12212	-1.57%
MCX Zinc	169	-2.14%
LME Zinc \$	2321	-2.11%

ENERGY MARKET WATCH

Energy Market	Close	% Chng
MCX Crude	5044	2.60%
NYMEX Crude \$	69.84	3.34%
MCX Natural Gas	205.3	0.54%
MYMEX Natural Gas	2.836	1.07%

FOREX & WORLD MARKET WATCH

Forex & World	Close	% Chng
Nifty	11287.5	-1.32%
USDINR	72.7	0.36%
EURUSD	1.1591	-0.04%
GBPUSD	1.3009	-0.21%
Dollar Index	95.15	-0.01%
Dow Jones	25971.12	0.43%

INVENTORY WATCH

Base metals	Previous	Daily Change	Total
Aluminium	10,58,875	-5,300	10,53,575
Copper	2,45,530	-4450	2,41,080
Lead	1,20,924	-200	1,20,724
Nickel	2,35,902	-726	2,35,176
Zinc	2,30,475	125	2,30,600

Market summary

- Gold turns positive after hitting two-week lows on trade tensions
- Copper Falls on Continued Trade Fears
- Oil prices rise on lower U.S. crude inventories, looming Iran sanctions

Precious metals Gold turned positive on Tuesday as investors bought when it approached \$1,200 per ounce. But bullion remained under pressure after hitting a two-week low and the dollar resumed its ascent amid broad risk-off sentiment, looming U.S. interest rate rises and prospects for escalating U.S.-China trade tensions.

Base Metals Copper prices dropped on Tuesday as investors continued to monitor the latest developments in the monthslong trade fight between the U.S. and China. Front-month copper for September delivery fell 0.2% to \$2.6040 a pound on the Comex division of the New York Mercantile Exchange after erasing most of its early losses.

NYMEX Oil prices rose on Wednesday after a report of falling crude inventories and the looming sanctions against Iran fueled expectations of a tightening market. Prices were also pushed up by Hurricane Florence, which is expected to make landfall on the U.S. East Coast on Friday, and which has caused fuel shortages following the evacuation of millions of households and businesses.

World Key Data

Date	Time	Country	Data	Forecast	Previous	Importance
12-Sep-18	18:00:00	US	PPI m/m	0.20%	0.00%	High
12-Sep-18	20:00:00	US	Crude Oil Inventories	-1.3M	-4.3M	High

Top Gainer / Loser

MCX

Commodity	Expiry Date	LTP	% Change	Commodity	Expiry Date	LTP	% Change
CRUDEOIL	19-Sep-18	5042	2.56	LEAD	28-Sep-18	143.1	-2.25
CRUDEOILM	19-Sep-18	5041	2.52	LEADMINI	28-Sep-18	143.15	-2.25
NATURALGAS	25-Sep-18	205.9	0.83	ZINCMINI	28-Sep-18	169.35	-1.94
GOLDGUINEA	28-Sep-18	24393	0.21	ZINC	28-Sep-18	169.4	-1.91
GOLDPETAL	28-Sep-18	3073	0.16	ALUMINI	28-Sep-18	147.35	-1.73

NCDEX

Commodity	Expiry Date	LTP	% Change	Commodity	Expiry Date	LTP	% Change
CHANA	19-Sep-18	3873	1.73	DHANIYA	20-Nov-18	5296	-1.89
CHANA	16-Oct-18	4003	1.42	TMCFGRNZM	19-Sep-18	6424	-1.56
CHANA	20-Nov-18	4053	1.35	COCUDAKL	20-Dec-18	1710.5	-1.38
WHEATFAQ	19-Sep-18	2031	1.2	DHANIYA	16-Oct-18	5155	-1.09
JEERAUNJHA	19-Sep-18	19225	1.13	GUARGUM5	20-Nov-18	9354	-0.96

Action from Open Interest

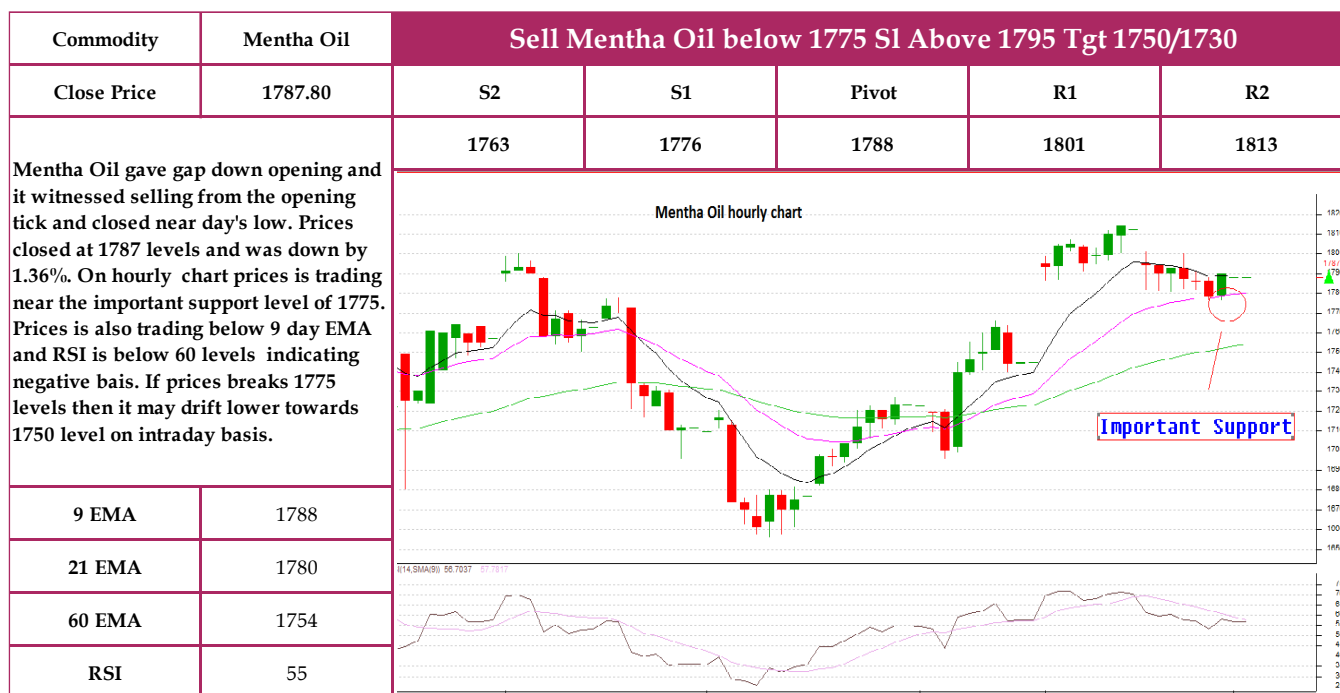
Long Buildup				Short Buildup			
Commodity	Close	% Chng in Price	% Chng in OI	Commodity	Close	% Chng in Price	% Chng in OI
CRUDEOIL	5044	2.60%	21.72%	LEAD	142.8	-2.46%	36.61%
SOY BEAN INDORE	3262	0.80%	0.47%	ZINC	169	-2.14%	26.55%
Long Unwinding				Short Covering			
Commodity	Close	% Chng in Price	% Chng in OI	Commodity	Close	% Chng in Price	% Chng in OI
TURMERIC NIZAMB	6396	-1.99%	-57.41%	JEERA UNJHA	19225	1.13%	-30.89%
RMSEED	4134	-0.34%	-57.52%	CHANA BIKANER	3873	1.73%	-34.96%

*Data can be used for intraday only.

Long Buildup / Short Covering = Buy

Short Buildup / Long unwinding = Short Sell

Chart of the day



Daily Support/ Resistance

Exchange	Commodity	Expiry	Close	S2	S1	Pivot	R1	R2
MCX	GOLD	5-Oct-18	30717	30460	30589	30663	30792	30866
MCX	SILVER	5-Dec-18	37401	36800	37101	37305	37606	37810
MCX	CRUDEOIL	19-Sep-18	5044	4833	4939	4996	5102	5159
MCX	NATURALGAS	25-Sep-18	205	202	203	205	207	208
MCX	COPPER	31-Aug-18	426	416	421	426	431	436
MCX	NICKEL	31-Aug-18	887	874	881	892	899	910
MCX	LEAD	31-Aug-18	143	140	141	144	145	148
MCX	ZINC	31-Aug-18	169	165	167	170	172	176
MCX	ALUMINIUM	31-Aug-18	147	145	146	148	150	152
MCX	MENTHAOIL	31-Aug-18	1788	1763	1776	1788	1801	1813
MCX	CPO-MCX	31-Aug-18	606	603	604	607	609	611
MCX	COTTON	31-Oct-18	23030	22810	22920	23080	23190	23350
NCDEX	CHANA BIKANER	19-Sep-18	3873	3742	3807	3847	3912	3952
NCDEX	COTTON SEED OIL	19-Sep-18	1677	1644	1661	1687	1704	1730
NCDEX	CORIANDER	19-Sep-18	4718	4616	4667	4716	4767	4816
NCDEX	CASTOR SEED	16-Oct-18	4603	4563	4583	4614	4634	4665
NCDEX	GUAR GUM5MT	16-Oct-18	9250	9125	9188	9285	9348	9445
NCDEX	GUAR SEED	19-Sep-18	4279	4222	4250	4294	4322	4366
NCDEX	JEERA UNJHA	19-Sep-18	19225	18735	18980	19155	19400	19575
NCDEX	RMSEED	19-Sep-18	4134	4102	4118	4140	4156	4178
NCDEX	REF SOYAOIL	16-Oct-18	743	741	742	743	745	746
NCDEX	SOY BEAN INDORE	19-Sep-18	3262	3195	3228	3249	3282	3303

Disclosures:

The following Disclosures are being made in compliance with the SEBI Research Analyst Regulations 2014 (herein after referred to as the Regulations).

1. Axis Securities Ltd. (ASL) is a SEBI Registered Research Analyst having registration no. INH000000297. ASL, the Research Entity (RE) as defined in the Regulations, is engaged in the business of providing Stock broking, Commodity Broking, Depository participant, Portfolio Management services & distribution of various financial products. ASL is a subsidiary company of Axis Bank Ltd. Axis Bank Ltd. is a listed public company and one of India's largest private sector bank and has its various subsidiaries engaged in businesses of Asset management, NBFC, Merchant Banking, Trusteeship, Venture Capital, Stock Broking, the details in respect of which are available on www.axisbank.com.
2. ASL is registered with the Securities & Exchange Board of India (SEBI) for its Stock broking, Commodity broking, Depository participant, Portfolio Management, and with the Association of Mutual Funds of India (AMFI) for distribution of mutual fund products and also registered with IRDA as Composite Corporate agent for insurance business activity.
3. ASL has no material adverse disciplinary history as on the date of publication of this report.
4. I/We, authors (Research team) and the name/s subscribed to this report, hereby certify that all of the views expressed in this research report accurately reflect my/our views. I/We also certify that no part of my/our compensation was, is, or will be directly or indirectly related to the specific recommendation(s) or view(s) in this report. I/we or my/our relative or ASL does not have any financial interest or trading positions in the subject commodity. I/we or my/our relative or ASL or its associate does not have any material conflict of interest

Research Team

Sr. No	Name	Designation	E-mail
1	Rajesh Palviya	Technical & Derivative Analyst - (Head)	rajesh.palviya@axissecurities.in
2	Kiran Jani	Technical Analyst - (Commodities)	kiran.jani@axissecurities.in
3	Deveya Gaglani	Technical Analyst - (Commodities)	Deveya.gaglani@axissecurities.in

ASL or any of its associates have not received compensation or other benefits from any third-party in connection with this report.

Term& Conditions:

This report has been prepared by ASL and is meant for sole use by the recipient and not for circulation. The report and information contained herein is strictly confidential and may not be altered in any way, transmitted to, copied or distributed, in part or in whole, to any other person or to the media or reproduced in any form, without prior written consent of ASL. The report is based on the facts, figures and information that are considered true, correct, reliable and accurate. The intent of this report is not recommendatory in nature. The information is obtained from publicly available media or other sources believed to be reliable. Such information has not been independently verified and no guaranty, representation of warranty, express or implied, is made as to its accuracy, completeness or correctness. All such information and opinions are subject to change without notice. The report is prepared solely for informational purpose and does not constitute an offer document or solicitation of offer to buy or sell commodities or other financial instruments for the clients. Though disseminated to all the customers simultaneously, not all customers may receive this report at the same time. ASL will not treat recipients as customers by virtue of their receiving this report.

Disclaimer:

Nothing in this report constitutes investment, legal, accounting and tax advice or a representation that any investment or strategy is suitable or appropriate to the recipient's specific circumstances. The commodities and strategies discussed and opinions expressed, if any, in this report may not be suitable for all investors, who must make their own investment decisions, based on their own investment objectives, financial positions and needs of specific recipient.

This report may not be taken in substitution for the exercise of independent judgment by any recipient. Each recipient of this report should make such investigations as it deems necessary to arrive at an independent evaluation of an investment in the commodities referred to in this report (including the merits and risks involved), and should consult its own advisors to determine the merits and risks of such an investment. Transactions in commodities involve substantial risk and are not suitable for all investors. ASL, its directors, analysts or employees do not take any responsibility, financial or otherwise, of the losses or the damages sustained due to the investments made or any action taken on basis of this report, including but not restricted to, fluctuation in the prices of commodities, obligation to take physical delivery of the commodities, etc. Past performance is not necessarily a guide to future performance. Price and value of the commodity referred to in this report may go up or down. Investors are advised to see Risk Disclosure Document to understand the risks associated before investing in the commodities markets. Reports based on technical analysis on studying charts of a commodity's price movement and trading volume as opposed to focusing on a commodity's fundamentals and as such may not match with a report on a commodity's fundamentals. Actual results may differ materially from those set forth in projections. Forward-looking statements are not predictions and may be subject to change without notice. ASL and its affiliated companies, their directors and employees may; (a) from time to time, have long or short position(s) in, and buy or sell in the commodities mentioned herein or (b) be engaged in any other transaction involving such commodities or earn brokerage or other compensation or have any other potential conflict of interests with respect to any recommendation and other related information and opinions. Each of these entities functions as a separate, distinct and independent of each other. The recipient should take this into account before interpreting this report. Compensation of Research Analysts is not based on any specific merchant banking, investment banking or brokerage service transactions. ASL may have issued other reports that are inconsistent with and reach different conclusion from the information presented in this report. Neither this report nor any copy of it may be taken or transmitted into the United State (to U.S. Persons), Canada, or Japan or distributed, directly or indirectly, in the United States or Canada or distributed or redistributed in Japan or to any resident thereof. If this report is inadvertently sent or has reached any individual in such country, especially, USA, the same may be ignored and brought to the attention of the sender. This report is not directed or intended for distribution to, or use by, any person or entity who is a citizen or resident of or located in any locality, state, country or other jurisdiction, where such distribution, publication, availability or use would be contrary to law, regulation or which would subject ASL to any registration or licensing requirement within such jurisdiction.

The Disclosures of Interest Statement incorporated in this document is provided solely to enhance the transparency and should not be treated as endorsement of the views expressed in the report. ASL reserves the right to make modifications and alternations to this document as may be required from time to time without any prior notice. The views expressed are those of the analyst(s) and the Company may or may not subscribe to all the views expressed therein.

Copyright in this document vests with Axis Securities Limited.

Axis Securities Limited, SEBI Single Reg. No.- MCX, NCDEX, NSE, BSE, & MSEI – INZ000161633, ARN No. 64610, CDSL-IN-DP-CDSL-693-2013, SEBI-Research Analyst Reg. No. INH 000000297, SEBI Portfolio Manager Reg. No.- INP000000654, Main/Dealing off.- Unit No. 2, Phoenix Market City, 15, LBS Road, Near Kamani Junction, Kurla (west), Mumbai-400070, Tel No. – 18002100808, Reg. off.- Axis House, 8th Floor, Wadia International Centre, Pandurang Budhkar Marg, Worli, Mumbai – 400 025. Compliance Officer: Anand Shaha, E-Mail ID: compliance.officer@axisdirect.in, Tel No: 022-42671582.