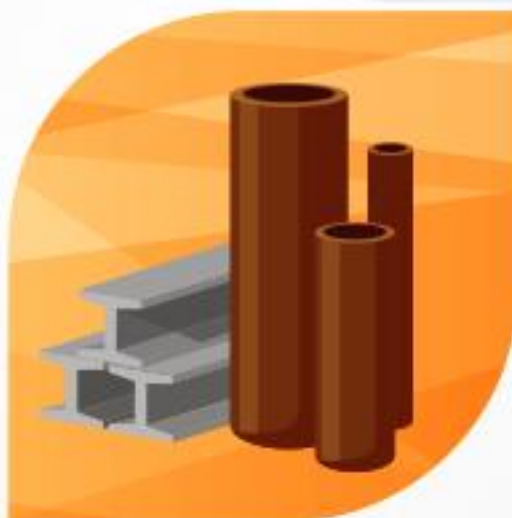


COMMODITY SNAP SHOT



11-June-19

PRECIOUS METALS MARKET WATCH

Precious Metals	Close	% Chng
MCX Gold	32660	-0.84%
COMEX Gold \$	1333	-0.60%
MCX Silver	36583	-2.04%
COMEX Silver \$	14.697	-2.05%

BASE METALS MARKET WATCH

Base Metals	Close	% Chng
MCX Aluminium	143.2	0.92%
LME Aluminium \$	1777	0.97%
MCX Copper	410.35	1.85%
LME Copper \$	5877	1.43%
MCX Lead	154.95	2.96%
LME Lead \$	1881	2.28%
MCX Nickel	850.8	0.38%
LME Nickel \$	11627	0.02%
MCX Zinc	204	0.32%
LME Zinc \$	2475	-0.32%

ENERGY MARKET WATCH

Energy Market	Close	% Chng
MCX Crude	3754	0.86%
NYMEX Crude \$	53.33	-1.22%
MCX Natural Gas	164.1	0.74%
NYMEX Natural Gas	2.367	1.28%

FOREX & WORLD MARKET WATCH

Forex & World	Close	% Chng
Nifty	11922.7	0.44%
USDINR	69.65	-0.26%
EURUSD	1.1314	-0.15%
GBPUSD	1.2681	-0.42%
Dollar Index	96.79	0.24%
Dow Jones	26062.68	0.33%

INVENTORY WATCH

Base metals	Previous	Daily Change	Total
Aluminium	10,77,215	-9,200	10,68,015
Copper	2,00,450	-25	2,00,425
Lead	71,756	-50	71,706
Nickel	1,58,943	-30	1,58,913
Zinc	1,01,555	-750	1,00,805

Market summary

- Gold falls 1% as U.S.-Mexico deal lifts risk sentiment
- Oil stable as market eyes ongoing supply cuts amid downturn
- Copper rebounds as U.S.-Mexico deal calms nerves
- Turmeric prices edged lower

Precious metals Gold prices dropped more than 1% on Monday, slipping from a 14-month peak, after U.S. President Donald Trump's decision not to impose trade tariffs on Mexico spurred risk sentiment and lifted the dollar from recent lows.

NYMEX Oil Oil prices stabilized on Tuesday on expectations that producer group OPEC and its allies will keep withholding supply to prevent prices from tumbling amid a broad economic slowdown which has started eating away at fuel demand growth.

Base Metals Copper prices rose in Asian trading on Monday following eight straight weekly losses, after Washington struck a deal to avert a tariff war with Mexico, boosting sentiment on trade and easing concerns about a global slowdown.

Agri Turmeric prices decreased on Monday at the Erode Turmeric Merchants Association Salesyard. Finger turmeric was sold at ₹5,649-7,584 a quintal, root variety was sold at ₹5,369-6,799. At the Regulated Marketing Committee, finger turmeric was sold at ₹5,869-7,084, root variety at ₹5,636-6,699. At the Erode Cooperative Marketing Society, finger turmeric was sold at ₹5,584-6,864 and root variety at ₹5,676-6,499. Out of 866 bags of turmeric kept for sale, 772 bags were sold.

World Key Data

Date	Time	Country	Data	Forecast	Previous	Importance
11-Jun-19	18:00:00	US	Core PPI m/m	0.20%	0.10%	High
11-Jun-19	18:00:00	US	PPI m/m	0.1%	0.2%	High

Top Gainer / Loser

MCX

Commodity	Expiry Date	LTP	% Change	Commodity	Expiry Date	LTP	% Change
CARDAMOM	15-Jul-19	2380.2	2.71	MENTHAOIL	28-Jun-19	1298.1	-2.51
LEADMINI	28-Jun-19	154.45	2.69	SILVERMIC	28-Jun-19	36643	-1.96
LEAD	28-Jun-19	154.5	2.66	SILVER	05-Jul-19	36625	-1.93
COPPERM	28-Jun-19	410.05	1.76	SILVERM	28-Jun-19	36657	-1.92
COPPER	28-Jun-19	410	1.70	CPO	28-Jun-19	498.6	-1.56

Action from Open Interest

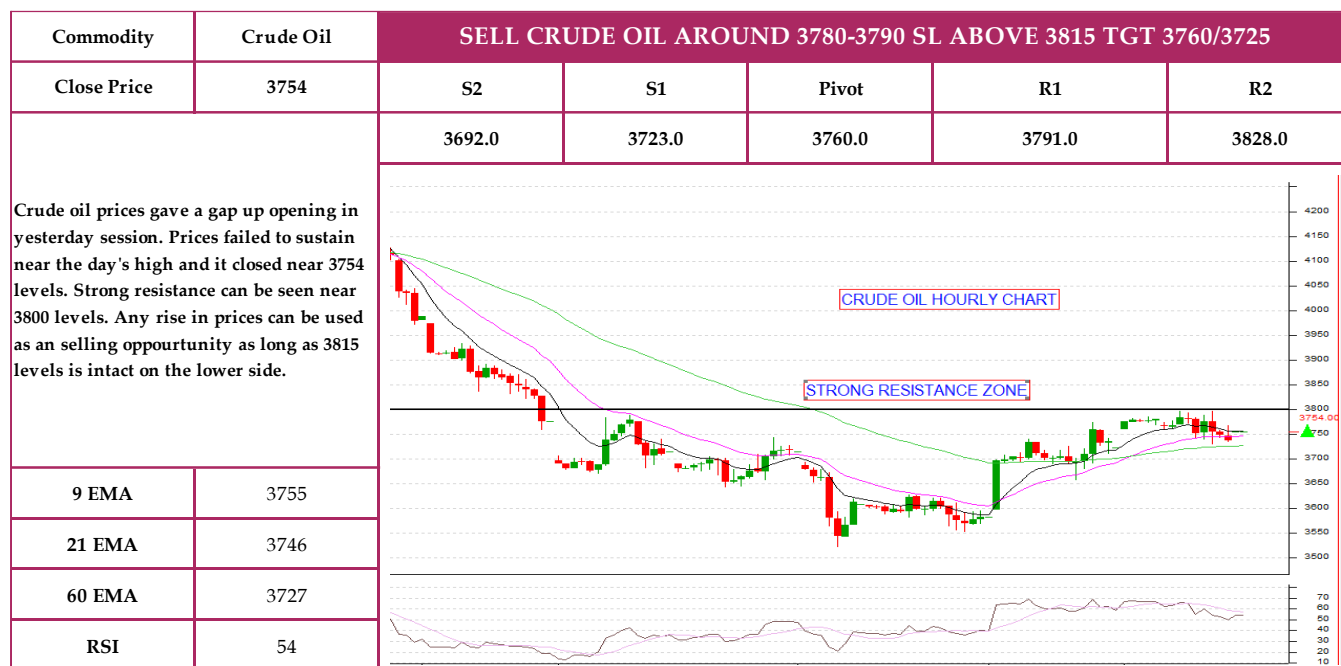
Long Buildup				Short Buildup			
Commodity	Close	% Chng in Price	% Chng in OI	Commodity	Close	% Chng in Price	% Chng in OI
LEAD 1ST	154.95	2.96%	64.65%	SILVER 1ST	36583	-2.04%	10.36%
ZINC 1ST	203.95	0.32%	2.94%	MENTHAOIL 1ST	1297.2	-2.58%	1.95%
Long Unwinding				Short Covering			
Commodity	Close	% Chng in Price	% Chng in OI	Commodity	Close	% Chng in Price	% Chng in OI
CHANA BIKANER 1ST	4360	-1.42%	-48.81%	COTTON SEED OIL 1ST	2645	0.11%	-38.58%
GUAR SEED 1ST	4125	-1.48%	-61.22%	CARDAMOM	2700.6	2.06%	-40.00%

*Data can be used for intraday only.

Long Buildup / Short Covering = Buy

Short Buildup / Long unwinding = Short Sell

Chart of the day



Daily Support/ Resistance

Exchange	Commodity	Expiry	Close	S2	S1	Pivot	R1	R2
MCX	GOLD	5-Aug-19	32660.0	32493.3	32576.7	32713.3	32796.7	32933.3
MCX	SILVER	5-Jul-19	36583.0	36052.3	36317.7	36808.3	37073.7	37564.3
MCX	CRUDEOIL	19-Jun-19	3754.0	3692.0	3723.0	3760.0	3791.0	3828.0
MCX	NATURALGAS	25-Jun-19	164.1	160.9	162.5	163.7	165.3	166.5
MCX	COPPER	28-Jun-19	410.4	403.1	406.7	408.7	412.3	414.3
MCX	NICKEL	28-Jun-19	850.8	842.2	846.5	854.1	858.4	866.0
MCX	LEAD	28-Jun-19	155.0	149.1	152.0	153.7	156.7	158.4
MCX	ZINC	28-Jun-19	204.0	202.2	203.1	204.3	205.2	206.4
MCX	ALUMINIUM	28-Jun-19	143.2	140.8	142.0	142.7	143.9	144.7
MCX	MENTHAOIL	28-Jun-19	1297.2	1270.5	1283.9	1305.9	1319.3	1341.3
MCX	CPO-MCX	28-Jun-19	498.9	490.2	494.5	500.1	504.4	510.0
MCX	COTTON	28-Jun-19	21180.0	20453.3	20816.7	21363.3	21726.7	22273.3
NCDEX	CHANA BIKANER	20-Jun-19	4360.0	4307.3	4333.7	4374.3	4400.7	4441.3
NCDEX	COTTON SEED OIL	20-Jun-19	2645.0	2616.0	2630.5	2652.5	2667.0	2689.0
NCDEX	CORIANDER	20-Jun-19	6793.0	6593.0	6693.0	6845.0	6945.0	7097.0
NCDEX	CASTOR SEED	20-Jun-19	5280.0	5152.0	5216.0	5328.0	5392.0	5504.0
NCDEX	GUAR GUM5MT	20-Jun-19	8325.0	8185.7	8255.3	8376.7	8446.3	8567.7
NCDEX	GUAR SEED	20-Jun-19	4125.0	4060.3	4092.7	4147.3	4179.7	4234.3
NCDEX	JEERA UNJHA	20-Jun-19	17450.0	17276.7	17363.3	17436.7	17523.3	17596.7
NCDEX	RMSEED	20-Jun-19	3884.0	3841.3	3862.7	3895.3	3916.7	3949.3
NCDEX	REF SOYAOIL	20-Jun-19	744.3	739.0	741.6	743.9	746.5	748.8
NCDEX	SOY BEAN INDORE	20-Jun-19	3624.0	3588.0	3606.0	3635.0	3653.0	3682.0

Disclosures:

The following Disclosures are being made in compliance with the SEBI Research Analyst Regulations 2014 (herein after referred to as the Regulations).

1. Axis Securities Ltd. (ASL) is a SEBI Registered Research Analyst having registration no. INH000000297. ASL, the Research Entity (RE) as defined in the Regulations, is engaged in the business of providing Stock broking, Commodity Broking, Depository participant, Portfolio Management services & distribution of various financial products. ASL is a subsidiary company of Axis Bank Ltd. Axis Bank Ltd. is a listed public company and one of India's largest private sector bank and has its various subsidiaries engaged in businesses of Asset management, NBFC, Merchant Banking, Trusteeship, Venture Capital, Stock Broking, the details in respect of which are available on www.axisbank.com.
2. ASL is registered with the Securities & Exchange Board of India (SEBI) for its Stock broking, Commodity broking, Depository participant, Portfolio Management, and with the Association of Mutual Funds of India (AMFI) for distribution of mutual fund products and also registered with IRDA as Composite Corporate agent for insurance business activity.
3. ASL has no material adverse disciplinary history as on the date of publication of this report.
4. I/We, authors (Research team) and the name/s subscribed to this report, hereby certify that all of the views expressed in this research report accurately reflect my/our views. I/We also certify that no part of my/our compensation was, is, or will be directly or indirectly related to the specific recommendation(s) or view(s) in this report. I/we or my/our relative or ASL does not have any financial interest or trading positions in the subject commodity. I/we or my/our relative or ASL or its associate does not have any material conflict of interest

Research Team

Sr. No	Name	Designation	E-mail
1	Rajesh Palviya	Technical & Derivative Analyst - (Head)	rajesh.palviya@axissecurities.in
2	Deveya Gaglani	Technical Analyst - (Commodities)	Deveya.gaglani@axissecurities.in
3	Amith Madiwale	Technical Analyst - (Commodities)	amithkumar.madiwale@axissecurities.in

ASL or any of its associates have not received compensation or other benefits from any third-party in connection with this report.

Term& Conditions:

This report has been prepared by ASL and is meant for sole use by the recipient and not for circulation. The report and information contained herein is strictly confidential and may not be altered in any way, transmitted to, copied or distributed, in part or in whole, to any other person or to the media or reproduced in any form, without prior written consent of ASL. The report is based on the facts, figures and information that are considered true, correct, reliable and accurate. The intent of this report is not recommendatory in nature. The information is obtained from publicly available media or other sources believed to be reliable. Such information has not been independently verified and no guaranty, representation of warranty, express or implied, is made as to its accuracy, completeness or correctness. All such information and opinions are subject to change without notice. The report is prepared solely for informational purpose and does not constitute an offer document or solicitation of offer to buy or sell commodities or other financial instruments for the clients. Though disseminated to all the customers simultaneously, not all customers may receive this report at the same time. ASL will not treat recipients as customers by virtue of their receiving this report.

Disclaimer:

Nothing in this report constitutes investment, legal, accounting and tax advice or a representation that any investment or strategy is suitable or appropriate to the recipient's specific circumstances. The commodities and strategies discussed and opinions expressed, if any, in this report may not be suitable for all investors, who must make their own investment decisions, based on their own investment objectives, financial positions and needs of specific recipient.

This report may not be taken in substitution for the exercise of independent judgment by any recipient. Each recipient of this report should make such investigations as it deems necessary to arrive at an independent evaluation of an investment in the commodities referred to in this report (including the merits and risks involved), and should consult its own advisors to determine the merits and risks of such an investment. Transactions in commodities involve substantial risk and are not suitable for all investors. ASL, its directors, analysts or employees do not take any responsibility, financial or otherwise, of the losses or the damages sustained due to the investments made or any action taken on basis of this report, including but not restricted to, fluctuation in the prices of commodities, obligation to take physical delivery of the commodities, etc. Past performance is not necessarily a guide to future performance. Price and value of the commodity referred to in this report may go up or down. Investors are advised to see Risk Disclosure Document to understand the risks associated before investing in the commodities markets. Reports based on technical analysis on studying charts of a commodity's price movement and trading volume as opposed to focusing on a commodity's fundamentals and as such may not match with a report on a commodity's fundamentals. Actual results may differ materially from those set forth in projections. Forward-looking statements are not predictions and may be subject to change without notice. ASL and its affiliated companies, their directors and employees may; (a) from time to time, have long or short position(s) in, and buy or sell in the commodities mentioned herein or (b) be engaged in any other transaction involving such commodities or earn brokerage or other compensation or have any other potential conflict of interests with respect to any recommendation and other related information and opinions. Each of these entities functions as a separate, distinct and independent of each other. The recipient should take this into account before interpreting this report. Compensation of Research Analysts is not based on any specific merchant banking, investment banking or brokerage service transactions. ASL may have issued other reports that are inconsistent with and reach different conclusion from the information presented in this report. Neither this report nor any copy of it may be taken or transmitted into the United State (to U.S. Persons), Canada, or Japan or distributed, directly or indirectly, in the United States or Canada or distributed or redistributed in Japan or to any resident thereof. If this report is inadvertently sent or has reached any individual in such country, especially, USA, the same may be ignored and brought to the attention of the sender. This report is not directed or intended for distribution to, or use by, any person or entity who is a citizen or resident of or located in any locality, state, country or other jurisdiction, where such distribution, publication, availability or use would be contrary to law, regulation or which would subject ASL to any registration or licensing requirement within such jurisdiction.

The Disclosures of Interest Statement incorporated in this document is provided solely to enhance the transparency and should not be treated as endorsement of the views expressed in the report. ASL reserves the right to make modifications and alternations to this document as may be required from time to time without any prior notice. The views expressed are those of the analyst(s) and the Company may or may not subscribe to all the views expressed therein.

Copyright in this document vests with Axis Securities Limited.

Axis Securities Limited, SEBI Single Reg. No.- MCX, NCDEX, NSE, BSE, & MSEI – INZ000161633, ARN No. 64610, CDSL-IN-DP-CDSL-693-2013, SEBI-Research Analyst Reg. No. INH 000000297, SEBI Portfolio Manager Reg. No.- INP000000654, Main/Dealing off.- Unit No. 2, Phoenix Market City, 15, LBS Road, Near Kamani Junction, Kurla (west), Mumbai-400070, Tel No. – 18002100808, Reg. off.- Axis House, 8th Floor, Wadia International Centre, Pandurang Budhkar Marg, Worli, Mumbai – 400 025. Compliance Officer: Anand Shaha, E-Mail ID: compliance.officer@axisdirect.in, Tel No: 022-42671582.