

COMMODITY SNAP SHOT



11-Jan-19

PRECIOUS METALS MARKET WATCH

Precious Metals	Close	% Chng
MCX Gold	31880	-0.38%
COMEX Gold \$	1288	-0.46%
MCX Silver	39285	-0.60%
COMEX Silver \$	15.61	-1.08%

BASE METALS MARKET WATCH

Base Metals	Close	% Chng
MCX Aluminium	130.1	-0.19%
LME Aluminium \$	1813	-1.57%
MCX Copper	412.4	-1.16%
LME Copper \$	5915	-0.66%
MCX Lead	139.3	0.54%
LME Lead \$	1977	0.61%
MCX Nickel	788.6	-0.43%
LME Nickel \$	11227	-0.25%
MCX Zinc	174	-1.42%
LME Zinc \$	2550	0.00%

ENERGY MARKET WATCH

Energy Market	Close	% Chng
MCX Crude	3678	-0.22%
NYMEX Crude \$	52.28	0.21%
MCX Natural Gas	211.2	0.00%
NYMEX Natural Gas	3	0.20%

FOREX & WORLD MARKET WATCH

Forex & World	Close	% Chng
Nifty	10821	-0.31%
USDINR	70.73	0.24%
EURUSD	1.1509	3.18%
GBPUSD	1.2753	-0.36%
Dollar Index	95.13	0.38%
Dow Jones	25998	0.46%

INVENTORY WATCH

Base metals	Previous	Daily Change	Total
Aluminium	12,24,925	4,650	12,29,575
Copper	99,552	925	1,00,477
Lead	1,16,280	125	1,16,405
Nickel	2,14,098	-1344	2,12,754
Zinc	2,01,975	-225	2,01,750

Market summary

- Gold has losing shine again financial markets gain
- Base metals prices on the London Metal Exchange had mixed
- Last hour buying drive helped Oil futures to mark their highest finish since mid-December

Precious metals prices finish lower after failing to overcome resistance at \$1,300 an ounce, but remain on track for a modest weekly gain as a result of overall weakness in the dollar. The news put even more pressure on the dollar. February gold traded below at \$1,290 an ounce.

Base Metals prices on the London Metal Exchange had mixed fortunes at the close of trading on Thursday January 10, with zinc's three-month price continuing its downtrend while positive US job data spurred a marginal uptick in the US dollar index.

NYMEX Oil prices move higher in the last few minutes of trading in New York on Thursday allowed U.S. benchmark oil futures to notch a ninth straight session of gains, the longest such stretch of gains in about nine years. As data showing declines in output among major oil producers. February West Texas Intermediate oil to settle at \$52.28 a barrel on the New York Mercantile Exchange.

World Key Data

Date	Time	Country	Data	Forecast	Previous	Importance
11-Jan-19	15:00:00	GBP	GDP (MoM)	0.10%	0.10%	High
11-Jan-19	19:00:00	US	CPI (MoM) (Dec)	-0.1%	0.0%	High

Top Gainer / Loser

MCX

Commodity	Expiry Date	LTP	% Change	Commodity	Expiry Date	LTP	% Change
NATURALGAS	28-Jan-19	212.6	0.66	MENTHAOIL	31-Jan-19	1604	-1.58
CARDAMOM	15-Feb-19	1590.1	0.64	ZINCMINI	31-Jan-19	174.15	-1.36
LEADMINI	31-Jan-19	139.25	0.51	ZINC	31-Jan-19	174.25	-1.30
LEAD	31-Jan-19	139.2	0.47	COPPER	28-Feb-19	412.25	-1.20
CPO	31-Jan-19	540.6	0.04	COPPERM	28-Feb-19	412.5	-1.14

NCDEX

Commodity	Expiry Date	LTP	% Change	Commodity	Expiry Date	LTP	% Change
JEERAUNJHA	19-Mar-19	17055	0.50	GUARGUM5	18-Jan-19	8132	-2.01
JEERAUNJHA	18-Jan-19	17275	0.41	GUARGUM5	20-Feb-19	8235	-1.95
CHANA	19-Mar-19	4337	0.39	GUARSEED10	18-Jan-19	4141.5	-1.81
CHANA	16-Apr-19	4372	0.3	GUARGUM5	19-Mar-19	8348	-1.79
COCUDAKL	18-Jan-19	1911.5	0.26	GUARSEED10	19-Mar-19	4241.5	-1.75

Action from Open Interest

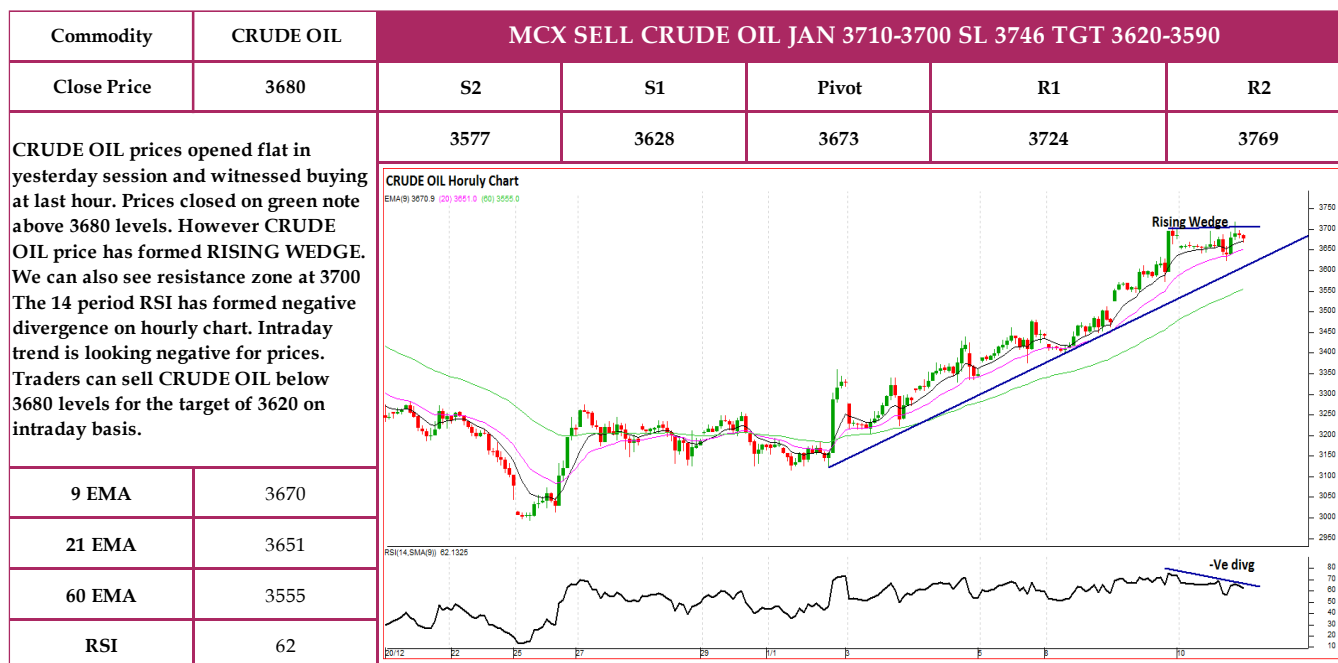
Long Buildup				Short Buildup			
Commodity	Close	% Chng in Price	% Chng in OI	Commodity	Close	% Chng in Price	% Chng in OI
				COPPER 1ST	412.4	-1.16%	8.73%
				ZINC 1ST	174.05	-1.42%	22.14%
Long Unwinding				Short Covering			
Commodity	Close	% Chng in Price	% Chng in OI	Commodity	Close	% Chng in Price	% Chng in OI
SILVER 1ST	39285	-0.60%	-3.15%	REF SOYAOIL 1ST	761.4	0.15%	-17.87%
GOLD 1ST	31880	-0.38%	-6.03%	LEAD 1ST	139.3	0.54%	-6.10%

*Data can be used for intraday only.

Long Buildup / Short Covering = Buy

Short Buildup / Long unwinding = Short Sell

Chart of the day



Daily Support/ Resistance

Exchange	Commodity	Expiry	Close	S2	S1	Pivot	R1	R2
MCX	GOLD	5-Feb-19	31880	31674.0	31777.0	31956.0	32059.0	32238.0
MCX	SILVER	5-Mar-19	39285	38934.3	39109.7	39435.3	39610.7	39936.3
MCX	CRUDEOIL	18-Dec-18	3678	3577.3	3627.7	3673.3	3723.7	3769.3
MCX	NATURALGAS	26-Dec-18	211	205.3	208.3	213.1	216.1	220.9
MCX	COPPER	28-Feb-19	412	407.3	409.8	414.3	416.9	421.4
MCX	NICKEL	31-Jan-19	789	776.3	782.4	789.5	795.6	802.7
MCX	LEAD	31-Jan-19	139	136.6	138.0	139.0	140.3	141.3
MCX	ZINC	31-Jan-19	174	169.4	171.7	174.5	176.9	179.7
MCX	ALUMINIUM	31-Jan-19	130	128.9	129.5	130.4	131.0	131.8
MCX	MENTHAOIL	31-Jan-19	1606	1575.4	1590.6	1600.6	1615.8	1625.8
MCX	CPO-MCX	31-Jan-19	540	532.9	536.6	540.3	544.0	547.7
MCX	COTTON	31-Jan-19	20750	20483.3	20616.7	20853.3	20986.7	21223.3
NCDEX	CHANA BIKANER	18-Jan-19	4157	4107.7	4132.3	4168.7	4193.3	4229.7
NCDEX	COTTON SEED OIL	18-Jan-19	1912	1888.5	1900.0	1918.5	1930.0	1948.5
NCDEX	CORIANDER	18-Jan-19	6067	5802.3	5934.7	6117.3	6249.7	6432.3
NCDEX	CASTOR SEED	18-Jan-19	5188	4998.7	5093.3	5190.7	5285.3	5382.7
NCDEX	GUAR GUM5MT	18-Jan-19	8132	7868.7	8000.3	8202.7	8334.3	8536.7
NCDEX	GUAR SEED	18-Jan-19	4142	4037.5	4089.5	4173.0	4225.0	4308.5
NCDEX	JEERA UNJHA	18-Jan-19	17275	17038.3	17156.7	17318.3	17436.7	17598.3
NCDEX	RMSEED	18-Jan-19	3854	3813.3	3833.7	3870.3	3890.7	3927.3
NCDEX	REF SOYAOIL	18-Jan-19	761	753.2	757.3	760.6	764.7	768.1
NCDEX	SOY BEAN INDORE	18-Jan-19	3564	3500.7	3532.3	3565.7	3597.3	3630.7

Disclosures:

The following Disclosures are being made in compliance with the SEBI Research Analyst Regulations 2014 (herein after referred to as the Regulations).

1. Axis Securities Ltd. (ASL) is a SEBI Registered Research Analyst having registration no. INH000000297. ASL, the Research Entity (RE) as defined in the Regulations, is engaged in the business of providing Stock broking, Commodity Broking, Depository participant, Portfolio Management services & distribution of various financial products. ASL is a subsidiary company of Axis Bank Ltd. Axis Bank Ltd. is a listed public company and one of India's largest private sector bank and has its various subsidiaries engaged in businesses of Asset management, NBFC, Merchant Banking, Trusteeship, Venture Capital, Stock Broking, the details in respect of which are available on www.axisbank.com.
2. ASL is registered with the Securities & Exchange Board of India (SEBI) for its Stock broking, Commodity broking, Depository participant, Portfolio Management, and with the Association of Mutual Funds of India (AMFI) for distribution of mutual fund products and also registered with IRDA as Composite Corporate agent for insurance business activity.
3. ASL has no material adverse disciplinary history as on the date of publication of this report.
4. I/We, authors (Research team) and the name/s subscribed to this report, hereby certify that all of the views expressed in this research report accurately reflect my/our views. I/We also certify that no part of my/our compensation was, is, or will be directly or indirectly related to the specific recommendation(s) or view(s) in this report. I/we or my/our relative or ASL does not have any financial interest or trading positions in the subject commodity. I/we or my/our relative or ASL or its associate does not have any material conflict of interest

Research Team

Sr. No	Name	Designation	E-mail
1	Rajesh Palviya	Technical & Derivative Analyst - (Head)	rajesh.palviya@axissecurities.in
2	Kiran Jani	Technical Analyst - (Commodities)	kiran.jani@axissecurities.in
3	Deveya Gaglani	Technical Analyst - (Commodities)	Deveya.gaglani@axissecurities.in

ASL or any of its associates have not received compensation or other benefits from any third-party in connection with this report.

Term & Conditions:

This report has been prepared by ASL and is meant for sole use by the recipient and not for circulation. The report and information contained herein is strictly confidential and may not be altered in any way, transmitted to, copied or distributed, in part or in whole, to any other person or to the media or reproduced in any form, without prior written consent of ASL. The report is based on the facts, figures and information that are considered true, correct, reliable and accurate. The intent of this report is not recommendatory in nature. The information is obtained from publicly available media or other sources believed to be reliable. Such information has not been independently verified and no guaranty, representation of warranty, express or implied, is made as to its accuracy, completeness or correctness. All such information and opinions are subject to change without notice. The report is prepared solely for informational purpose and does not constitute an offer document or solicitation of offer to buy or sell commodities or other financial instruments for the clients. Though disseminated to all the customers simultaneously, not all customers may receive this report at the same time. ASL will not treat recipients as customers by virtue of their receiving this report.

Disclaimer:

Nothing in this report constitutes investment, legal, accounting and tax advice or a representation that any investment or strategy is suitable or appropriate to the recipient's specific circumstances. The commodities and strategies discussed and opinions expressed, if any, in this report may not be suitable for all investors, who must make their own investment decisions, based on their own investment objectives, financial positions and needs of specific recipient.

This report may not be taken in substitution for the exercise of independent judgment by any recipient. Each recipient of this report should make such investigations as it deems necessary to arrive at an independent evaluation of an investment in the commodities referred to in this report (including the merits and risks involved), and should consult its own advisors to determine the merits and risks of such an investment. Transactions in commodities involve substantial risk and are not suitable for all investors. ASL, its directors, analysts or employees do not take any responsibility, financial or otherwise, of the losses or the damages sustained due to the investments made or any action taken on basis of this report, including but not restricted to, fluctuation in the prices of commodities, obligation to take physical delivery of the commodities, etc. Past performance is not necessarily a guide to future performance. Price and value of the commodity referred to in this report may go up or down. Investors are advised to see Risk Disclosure Document to understand the risks associated before investing in the commodities markets. Reports based on technical analysis on studying charts of a commodity's price movement and trading volume as opposed to focusing on a commodity's fundamentals and as such may not match with a report on a commodity's fundamentals. Actual results may differ materially from those set forth in projections. Forward-looking statements are not predictions and may be subject to change without notice. ASL and its affiliated companies, their directors and employees may; (a) from time to time, have long or short position(s) in, and buy or sell in the commodities mentioned herein or (b) be engaged in any other transaction involving such commodities or earn brokerage or other compensation or have any other potential conflict of interests with respect to any recommendation and other related information and opinions. Each of these entities functions as a separate, distinct and independent of each other. The recipient should take this into account before interpreting this report. Compensation of Research Analysts is not based on any specific merchant banking, investment banking or brokerage service transactions. ASL may have issued other reports that are inconsistent with and reach different conclusion from the information presented in this report. Neither this report nor any copy of it may be taken or transmitted into the United State (to U.S. Persons), Canada, or Japan or distributed, directly or indirectly, in the United States or Canada or distributed or redistributed in Japan or to any resident thereof. If this report is inadvertently sent or has reached any individual in such country, especially, USA, the same may be ignored and brought to the attention of the sender. This report is not directed or intended for distribution to, or use by, any person or entity who is a citizen or resident of or located in any locality, state, country or other jurisdiction, where such distribution, publication, availability or use would be contrary to law, regulation or which would subject ASL to any registration or licensing requirement within such jurisdiction.

The Disclosures of Interest Statement incorporated in this document is provided solely to enhance the transparency and should not be treated as endorsement of the views expressed in the report. ASL reserves the right to make modifications and alternations to this document as may be required from time to time without any prior notice. The views expressed are those of the analyst(s) and the Company may or may not subscribe to all the views expressed therein.

Copyright in this document vests with Axis Securities Limited.

Axis Securities Limited, SEBI Single Reg. No.- MCX, NCDEX, NSE, BSE, & MSEI – INZ000161633, ARN No. 64610, CDSL-IN-DP-CDSL-693-2013, SEBI-Research Analyst Reg. No. INH 000000297, SEBI Portfolio Manager Reg. No.- INP000000654, Main/Dealing off.- Unit No. 2, Phoenix Market City, 15, LBS Road, Near Kamani Junction, Kurla (west), Mumbai-400070, Tel No. – 18002100808, Reg. off.- Axis House, 8th Floor, Wadia International Centre, Pandurang Budhkar Marg, Worli, Mumbai – 400 025.Compliance Officer: Anand Shaha, E-Mail ID: compliance.officer@axisdirect.in, Tel No: 022-42671582.