

COMMODITY SNAP SHOT



07-Feb-19

PRECIOUS METALS MARKET WATCH

Precious Metals	Close	% Chng
MCX Gold	33109	-0.65%
COMEX Gold \$	1314	-0.38%
MCX Silver	39945	-0.50%
COMEX Silver \$	15.701	-1.02%

BASE METALS MARKET WATCH

Base Metals	Close	% Chng
MCX Aluminium	136.05	-0.26%
LME Aluminium \$	1890	-1.82%
MCX Copper	447.25	-0.42%
LME Copper \$	6247	0.34%
MCX Lead	148.6	-0.10%
LME Lead \$	2082	-0.90%
MCX Nickel	922.5	-0.01%
LME Nickel \$	12912	-1.15%
MCX Zinc	195	0.23%
LME Zinc \$	2710	-0.81%

ENERGY MARKET WATCH

Energy Market	Close	% Chng
MCX Crude	3841	-1.03%
NYMEX Crude \$	54.01	0.41%
MCX Natural Gas	188	-2.69%
NYMEX Natural Gas	2.662	-1.37%

FOREX & WORLD MARKET WATCH

Forex & World	Close	% Chng
Nifty	11082.5	1.35%
USDINR	71.54	0.03%
EURUSD	1.135	-0.45%
GBPUSD	1.2903	-0.39%
Dollar Index	96.53	0.47%
Dow Jones	25391.59	-0.07%

INVENTORY WATCH

Base metals	Previous	Daily Change	Total
Aluminium	12,38,350	1,000	12,39,350
Copper	1,18,527	-100	1,18,427
Lead	81,400	-1950	79,450
Nickel	2,08,054	-336	2,07,718
Zinc	1,87,200	225	1,87,425

Market summary

- Gold falls to 1-week low on stronger dollar, but holds above \$1,300 level
- London nickel, copper retreat from multi-month highs
- Oil dips on rising U.S. supply, but OPEC cuts and Venezuela sanctions support
- Soya steady on low arrivals

Precious metals Gold fell to a more than one-week low on Thursday, pressured by a stronger dollar, but worries over slowing global economic growth and the spectre of another U.S. government shutdown kept the safe-haven metal above the key \$1,300 level.

Base Metals London nickel fell on Thursday, extending its pullback from a more than four-month peak reached the day before on supply concerns, while copper retreated after a three-day rise amid a stronger dollar. Trading remained subdued, however, with markets in China still closed for the week-long Lunar New Year holiday.

NYMEX Oil Oil prices slipped on Thursday after U.S. crude inventories rose and the country's production held at record levels, but OPEC-led supply cuts and Washington's sanctions against Venezuela supported markets.

Agri Despite weak physical demand, both soy oil and soybean ruled firm amid declining arrival and weak availability of soybean seeds with the crushers, with soy refined quoted at ₹778-80 for 10 kg, while soy solvent ruled at ₹745-50. In futures however, soybean traded higher with its February and March contracts on the NCDEX today closing at ₹3,822 and ₹3,869.

World Key Data

Date	Time	Country	Data	Forecast	Previous	Importance
07-Feb-19	21:00:00	US	Natural Gas Storage	-228B	-173B	High

Top Gainer / Loser

MCX

Commodity	Expiry Date	LTP	% Change	Commodity	Expiry Date	LTP	% Change
CPO	28-Feb-19	570.5	0.78	NATURALGAS	25-Feb-19	187	-3.21
MENTHAOIL	28-Feb-19	1564	0.64	CRUDEOIL	19-Feb-19	3841	-1.03
ZINC	28-Feb-19	195.45	0.31	CRUDEOILM	19-Feb-19	3843	-0.95
ZINCMINI	28-Feb-19	195.4	0.31	GOLD	05-Apr-19	33097	-0.69
NICKELM	28-Feb-19	923.6	0.12	GOLDM	05-Mar-19	33008	-0.64

Action from Open Interest

Long Buildup			
Commodity	Close	% Chng in Price	% Chng in OI
ZINC 1ST	195.3	0.23%	27.57%

Long Unwinding			
Commodity	Close	% Chng in Price	% Chng in OI
SOY BEAN INDORE 1ST	3753	0.00%	-36.26%
RMSEED 1ST	3935	-0.23%	-49.41%

Short Buildup			
Commodity	Close	% Chng in Price	% Chng in OI
CRUDEOIL 1ST	3841	-1.03%	52.05%
NATURALGAS 1ST	188	-2.69%	36.36%

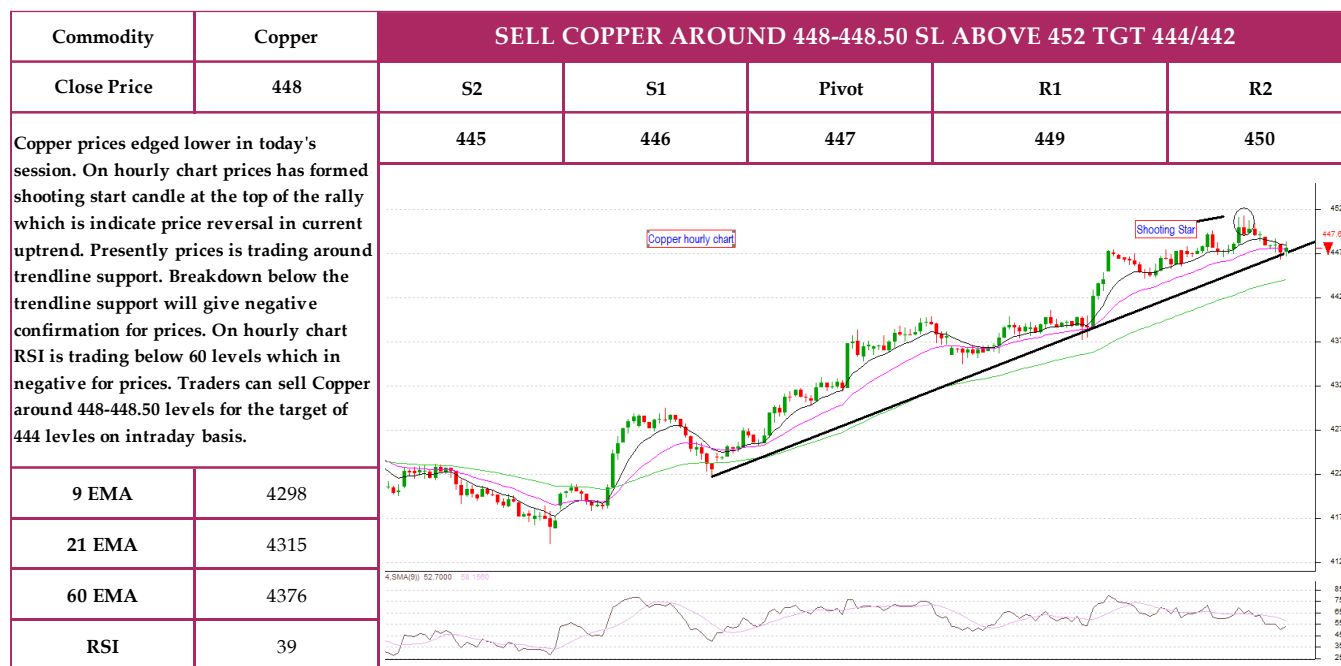
Short Covering			
Commodity	Close	% Chng in Price	% Chng in OI
CASTOR SEED NEW 1ST	5016	0.28%	-28.76%
GUAR GUM5MT 1ST	8161	0.25%	-34.32%

*Data can be used for intraday only.

Long Buildup / Short Covering = Buy

Short Buildup / Long unwinding = Short Sell

Chart of the day



Daily Support/ Resistance

Exchange	Commodity	Expiry	Close	S2	S1	Pivot	R1	R2
MCX	GOLD	5-Apr-19	33109	32893.0	33001.0	33143.0	33251.0	33393.0
MCX	SILVER	5-Mar-19	39945	39763.0	39854.0	39955.0	40046.0	40147.0
MCX	CRUDEOIL	18-Dec-18	3841	3811.0	3826.0	3851.0	3866.0	3891.0
MCX	NATURALGAS	25-Feb-19	188	182.3	185.2	189.4	192.3	196.5
MCX	COPPER	28-Feb-19	447	444.9	446.1	447.5	448.7	450.1
MCX	NICKEL	28-Feb-19	923	911.8	917.2	923.0	928.4	934.2
MCX	LEAD	28-Feb-19	149	147.2	147.9	148.9	149.6	150.6
MCX	ZINC	28-Feb-19	195	193.5	194.4	195.1	196.0	196.6
MCX	ALUMINIUM	28-Feb-19	136	135.4	135.7	136.2	136.5	136.9
MCX	MENTHAOIL	31-Jan-19	1563	1521.3	1542.2	1566.1	1587.0	1610.9
MCX	CPO-MCX	28-Feb-19	571	567.6	569.0	570.5	571.9	573.4
MCX	COTTON	28-Feb-19	20660	20600.0	20630.0	20670.0	20700.0	20740.0
NCDEX	CHANA BIKANER	20-Feb-19	4265	4205.0	4235.0	4255.0	4285.0	4305.0
NCDEX	COTTON SEED OIL	16-Apr-19	1949	1921.0	1935.0	1951.5	1965.5	1982.0
NCDEX	CORIANDER	20-Feb-19	6230	6077.3	6153.7	6236.3	6312.7	6395.3
NCDEX	CASTOR SEED	20-Feb-19	5016	4964.0	4990.0	5008.0	5034.0	5052.0
NCDEX	GUAR GUM5MT	20-Feb-19	8161	8041.0	8101.0	8146.0	8206.0	8251.0
NCDEX	GUAR SEED	19-Mar-19	4127	4077.5	4102.0	4119.5	4144.0	4161.5
NCDEX	JEERA UNJHA	20-Feb-19	15530	15296.7	15413.3	15481.7	15598.3	15666.7
NCDEX	RMSEED	20-Feb-19	3935	3913.0	3924.0	3941.0	3952.0	3969.0
NCDEX	REF SOYAOIL	20-Feb-19	771	766.9	768.8	770.4	772.3	773.9
NCDEX	SOY BEAN INDORE	16-Apr-19	3753	3685.0	3719.0	3751.0	3785.0	3817.0

Disclosures:

The following Disclosures are being made in compliance with the SEBI Research Analyst Regulations 2014 (herein after referred to as the Regulations).

1. Axis Securities Ltd. (ASL) is a SEBI Registered Research Analyst having registration no. INH000000297. ASL, the Research Entity (RE) as defined in the Regulations, is engaged in the business of providing Stock broking, Commodity Broking, Depository participant, Portfolio Management services & distribution of various financial products. ASL is a subsidiary company of Axis Bank Ltd. Axis Bank Ltd. is a listed public company and one of India's largest private sector bank and has its various subsidiaries engaged in businesses of Asset management, NBFC, Merchant Banking, Trusteeship, Venture Capital, Stock Broking, the details in respect of which are available on www.axisbank.com.
2. ASL is registered with the Securities & Exchange Board of India (SEBI) for its Stock broking, Commodity broking, Depository participant, Portfolio Management, and with the Association of Mutual Funds of India (AMFI) for distribution of mutual fund products and also registered with IRDA as Composite Corporate agent for insurance business activity.
3. ASL has no material adverse disciplinary history as on the date of publication of this report.
4. I/We, authors (Research team) and the name/s subscribed to this report, hereby certify that all of the views expressed in this research report accurately reflect my/our views. I/We also certify that no part of my/our compensation was, is, or will be directly or indirectly related to the specific recommendation(s) or view(s) in this report. I/we or my/our relative or ASL does not have any financial interest or trading positions in the subject commodity. I/we or my/our relative or ASL or its associate does not have any material conflict of interest

Research Team

Sr. No	Name	Designation	E-mail
1	Rajesh Palviya	Technical & Derivative Analyst - (Head)	rajesh.palviya@axissecurities.in
2	Kiran Jani	Technical Analyst - (Commodities)	kiran.jani@axissecurities.in
3	Deveya Gaglani	Technical Analyst - (Commodities)	Deveya.gaglani@axissecurities.in

ASL or any of its associates have not received compensation or other benefits from any third-party in connection with this report.

Term& Conditions:

This report has been prepared by ASL and is meant for sole use by the recipient and not for circulation. The report and information contained herein is strictly confidential and may not be altered in any way, transmitted to, copied or distributed, in part or in whole, to any other person or to the media or reproduced in any form, without prior written consent of ASL. The report is based on the facts, figures and information that are considered true, correct, reliable and accurate. The intent of this report is not recommendatory in nature. The information is obtained from publicly available media or other sources believed to be reliable. Such information has not been independently verified and no guaranty, representation of warranty, express or implied, is made as to its accuracy, completeness or correctness. All such information and opinions are subject to change without notice. The report is prepared solely for informational purpose and does not constitute an offer document or solicitation of offer to buy or sell commodities or other financial instruments for the clients. Though disseminated to all the customers simultaneously, not all customers may receive this report at the same time. ASL will not treat recipients as customers by virtue of their receiving this report.

Disclaimer:

Nothing in this report constitutes investment, legal, accounting and tax advice or a representation that any investment or strategy is suitable or appropriate to the recipient's specific circumstances. The commodities and strategies discussed and opinions expressed, if any, in this report may not be suitable for all investors, who must make their own investment decisions, based on their own investment objectives, financial positions and needs of specific recipient.

This report may not be taken in substitution for the exercise of independent judgment by any recipient. Each recipient of this report should make such investigations as it deems necessary to arrive at an independent evaluation of an investment in the commodities referred to in this report (including the merits and risks involved), and should consult its own advisors to determine the merits and risks of such an investment. Transactions in commodities involve substantial risk and are not suitable for all investors. ASL, its directors, analysts or employees do not take any responsibility, financial or otherwise, of the losses or the damages sustained due to the investments made or any action taken on basis of this report, including but not restricted to, fluctuation in the prices of commodities, obligation to take physical delivery of the commodities, etc. Past performance is not necessarily a guide to future performance. Price and value of the commodity referred to in this report may go up or down. Investors are advised to see Risk Disclosure Document to understand the risks associated before investing in the commodities markets. Reports based on technical analysis on studying charts of a commodity's price movement and trading volume as opposed to focusing on a commodity's fundamentals and as such may not match with a report on a commodity's fundamentals. Actual results may differ materially from those set forth in projections. Forward-looking statements are not predictions and may be subject to change without notice. ASL and its affiliated companies, their directors and employees may; (a) from time to time, have long or short position(s) in, and buy or sell in the commodities mentioned herein or (b) be engaged in any other transaction involving such commodities or earn brokerage or other compensation or have any other potential conflict of interests with respect to any recommendation and other related information and opinions. Each of these entities functions as a separate, distinct and independent of each other. The recipient should take this into account before interpreting this report. Compensation of Research Analysts is not based on any specific merchant banking, investment banking or brokerage service transactions. ASL may have issued other reports that are inconsistent with and reach different conclusion from the information presented in this report. Neither this report nor any copy of it may be taken or transmitted into the United State (to U.S. Persons), Canada, or Japan or distributed, directly or indirectly, in the United States or Canada or distributed or redistributed in Japan or to any resident thereof. If this report is inadvertently sent or has reached any individual in such country, especially, USA, the same may be ignored and brought to the attention of the sender. This report is not directed or intended for distribution to, or use by, any person or entity who is a citizen or resident of or located in any locality, state, country or other jurisdiction, where such distribution, publication, availability or use would be contrary to law, regulation or which would subject ASL to any registration or licensing requirement within such jurisdiction.

The Disclosures of Interest Statement incorporated in this document is provided solely to enhance the transparency and should not be treated as endorsement of the views expressed in the report. ASL reserves the right to make modifications and alternations to this document as may be required from time to time without any prior notice. The views expressed are those of the analyst(s) and the Company may or may not subscribe to all the views expressed therein.

Copyright in this document vests with Axis Securities Limited.

Axis Securities Limited, SEBI Single Reg. No.- MCX, NCDEX, NSE, BSE, & MSEI – INZ000161633, ARN No. 64610, CDSL-IN-DP-CDSL-693-2013, SEBI-Research Analyst Reg. No. INH 000000297, SEBI Portfolio Manager Reg. No.- INP000000654, Main/Dealing off.- Unit No. 2, Phoenix Market City, 15, LBS Road, Near Kamani Junction, Kurla (west), Mumbai-400070, Tel No. – 18002100808, Reg. off.- Axis House, 8th Floor, Wadia International Centre, Pandurang Budhkar Marg, Worli, Mumbai – 400 025. Compliance Officer: Anand Shaha, E-Mail ID: compliance.officer@axisdirect.in, Tel No: 022-42671582.