

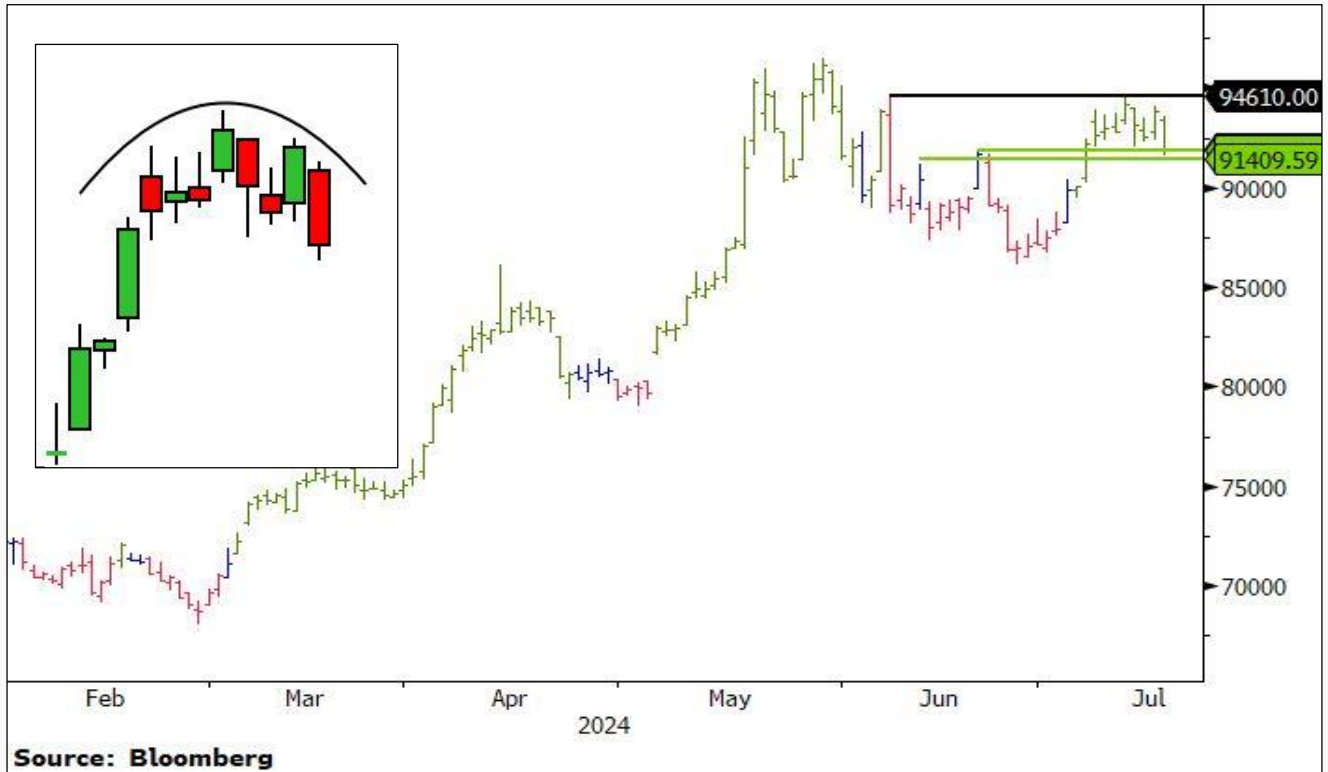
Commodity	CMP	Prior Day's Range	Today's Implied Range*
MCX GOLD	74137(-0.18%)	74068-74731	\$2432.25-\$2496.67



Implied range is for the Comex front-month futures

METRICS	INSIGHTS
What Drove Prices	Profit Booking near record high
Short-Term Price Regime	Bullish
10-Day Volatility	Below the mean and toward the low of the 30-day range
Technical Pattern	None
Critical level for Pattern Continuation	74,731 (Up), 73,149 (Down)
Daily Streak (minimum 4 sessions)	None
Notable Candlestick/Bar Pattern	Bearish Harami, Shooting Star
OTM Options Skew (Comex)	Call premium fell more than put premium
Standard Pivot-Based Resistances	74556 74975 75219
Standard Pivot-Based Supports	73893 73649 73230
Pivot	74312
MA Proximity (20/50/100/200)	None
Daily Momentum (Stochastics)	Bullish but overbought (MCX and Comex)
Average return on the day (Comex, %)	0
Trend score	0 (Neutral)
Quick Takeaway	\$2,500 is next resistance

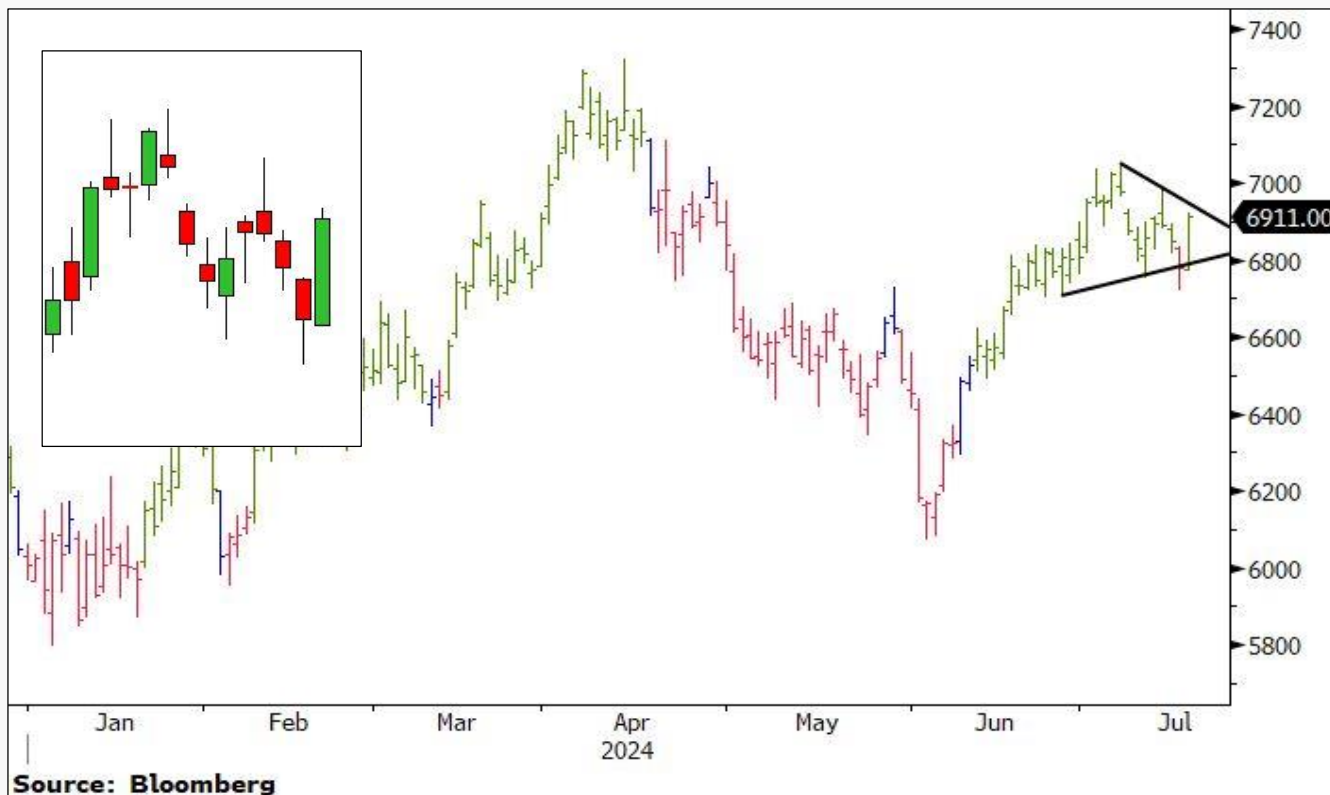
Commodity	CMP	Prior Day's Range	Today's Implied Range*
MCX SILVER	91942(-2.04%)	91620-93575	\$29.19-\$31.97



Implied range is for the Comex front-month futures

METRICS	INSIGHTS
What Drove Prices	Sell-off in Industrial Metals
Short-Term Price Regime	Bullish
10-Day Volatility	At the 30-day mean and the midpoint of the 30-day range
Technical Pattern	None
Critical level for Pattern Continuation	94,610 (Up), 90,223 (Down)
Daily Streak (minimum 4 sessions)	None
Notable Candlestick/Bar Pattern	None
OTM Options Skew (Comex)	Call premium fell more than put premium
Standard Pivot-Based Resistances	93138 94334 95093
Standard Pivot-Based Supports	91183 90424 89228
Pivot	92379
MA Proximity (20/50/100/200)	None
Daily Momentum (Stochastics)	Bearish (MCX and Comex)
Average return on the day (Comex, %)	0
Trend score	-1 (Mild Bearish)
Quick Takeaway	Weakness persists till \$32 intact

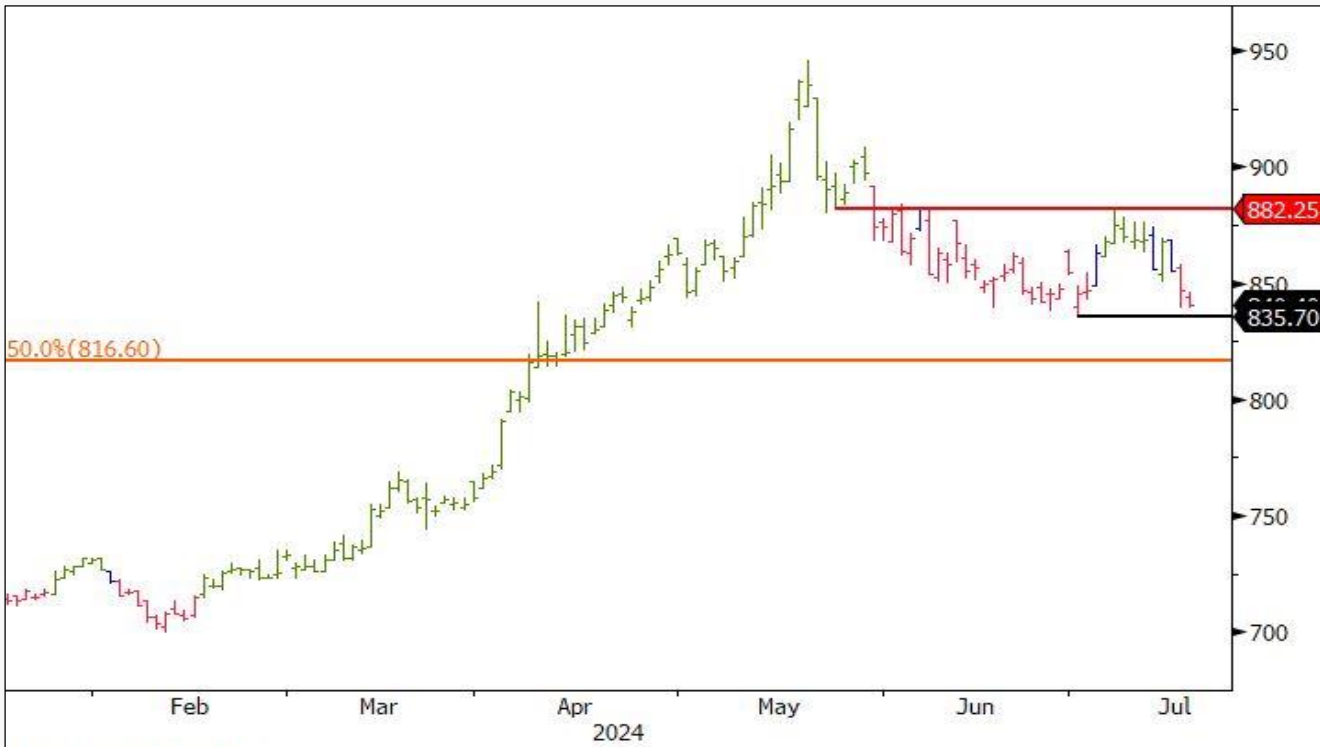
Commodity	CMP	Prior Day's Range	Today's Implied Range*
MCX CRUDE OIL	6911(1.95%)	6773-6924	\$79.48-\$84.78



Implied range is for the Nymex front-month futures

METRICS	INSIGHTS
What Drove Prices	Drop in Crude oil inventories
Short-Term Price Regime	Bullish
10-Day Volatility	Above the 30-day average and at the 30-day high
Technical Pattern	Head and Shoulders
Critical level for Pattern Continuation	6,988 (Up), 6,720 (Down)
Daily Streak (minimum 4 sessions)	None
Notable Candlestick/Bar Pattern	Bullish Engulfing
OTM Options Skew (Nymex)	Call premium dropped more than put premium
Standard Pivot-Based Resistances	6966 7020 7117
Standard Pivot-Based Supports	6815 6718 6664
Pivot	6869
MA Proximity (20/50/100/200)	20-DMA (-0.1%)
Daily Momentum (Stochastics)	Bearish (MCX and Nymex)
Average return on the day (Nymex, %)	0
(Neutral)	-1 (Mild Bearish)
Quick Takeaway	\$85.12 is major resistance

Commodity	CMP	Prior Day's Range	Today's Implied Range*
MCX COPPER	840.4(-0.76%)	839.2-846.5	\$434.62-\$448.32



Source: Bloomberg

Implied range is for the Comex front-month futures

METRICS	INSIGHTS
What Drove Prices	Chinese Economic Data Remains Weak, No Stimulus Announced
Short-Term Price Regime	Bearish
10-Day Volatility	At the 30-day mean and near the 30-day low
Technical Pattern	None
Critical level for Pattern Continuation	869.50 (Up), 835.70 (Down)
Daily Streak (minimum 4 sessions)	None
Notable Candlestick/Bar Pattern	None
OTM Options Skew (Comex)	Call premium fell while put premium rose
Standard Pivot-Based Resistances	845 849 852
Standard Pivot-Based Supports	838 835 830
Pivot	842
MA Proximity (20/50/100/200)	None
Daily Momentum (Stochastics)	Bearish (MCX and Comex)
Average return on the day (Comex, %)	-0.1
Trend score	-4 (Bearish)
Quick Takeaway	\$4.49 is a major upside hurdle

Economic Calendar

Date	Time	C	A	M	R	Event	Period	Surv(M)	Actual	Prior	Revised
21)	07/18 18:00	US	🔔	🔔	📊	Initial Jobless Claims	Jul 13	229k	--	222k	--
22)	07/18 18:00	US	🔔	🔔	📊	Continuing Claims	Jul 6	1856k	--	1852k	--
23)	07/18 18:00	US	🔔	🔔	📊	Philadelphia Fed Business Outlook	Jul	2.9	--	1.3	--
24)	07/18 19:30	US	🔔	🔔	📊	Leading Index	Jun	-0.3%	--	-0.5%	--

Camarilla Pivots (MCX)

Ticker	Last Px	R1	R2	R3	R4	Pivot	S1	S2	S3	S4
Gold	74137.00	74197.77	74258.55	74319.33	74501.65	74312.00	74076.23	74015.45	73954.68	73772.35
Silver	91942.00	92121.21	92300.42	92479.63	93017.25	92379.00	91762.79	91583.58	91404.38	90866.75
WTI Crude	6911.00	6924.84	6938.68	6952.53	6994.05	6869.33	6897.16	6883.32	6869.48	6827.95
Copper	840.40	841.07	841.74	842.41	844.42	842.03	839.73	839.06	838.39	836.39
Natural Gas	170.50	171.85	173.20	174.54	178.59	175.13	169.15	167.81	166.46	162.42
Lead	189.30	189.56	189.82	190.08	190.87	190.15	189.04	188.78	188.52	187.73
Zinc	267.05	267.34	267.64	267.93	268.81	267.82	266.76	266.46	266.17	265.29
Aluminium	222.50	222.72	222.94	223.16	223.82	223.03	222.28	222.06	221.84	221.18

Camarilla Pivots (US\$)

Ticker	Last Price	R1	R2	R3	R4	Pivot	S1	S2	S3	S4
Gold Futures	d ↓2468.30	2466.12	2469.13	2472.15	2481.20	2469.00	2460.08	2457.07	2454.05	2445.00
Silver Futures	d s30.137c	30.31	30.41	30.51	30.80	30.57	30.11	30.01	29.91	29.62
WTI Crude Futures	d 83.28	83.34	83.59	83.83	84.56	82.22	82.86	82.61	82.37	81.64
Comex Copper Futures	d s439.90c	440.27	440.58	440.90	441.85	440.67	439.63	439.32	439.00	438.05
Natural Gas Futures	d 2.047	2.07	2.09	2.11	2.16	2.09	2.04	2.02	2.00	1.95

All futures prices in the above table are with a 15-min delay

Market Movers

Commodities	Equity Indexes	Forex	Sovereign Bonds
Whole Milk NZX -1.74% 7701.601 c -136.50	Taiwan TAIEX -2.18% 23252.23 d -517.59	Indonesia Rupiah -0.37% 16160 +60	New Zealand 10Y -2.7bp 4.345
Steel SHF -1.70% 3461 d -60	Japan Nikkei -1.99% 40277.86 d -819.83	Vietnam Dong +0.22% 25293 -55	Australia 2Y +2.2bp 4.099
Aluminum SHF -0.99% 19595 d -195	Pakistan KSE +1.37% 81129.38 c +1099.0	Taiwan Dollar NDF -0.18% 32.551 +0.060	Japan 5Y +1.1bp 0.577
Nickel LME -0.83% 16457.00 c -137.00	South Korea KOSPI -1.30% 2806.24 -37.05	Pakistan Rupee NDF +0.16% 278.95 c -0.46	Singapore 2Y +1.0bp ↑3.092
Copper SHF -0.74% ↓78010 d -580	Indonesia JCI +0.86% ↓7286.336 +62.118	Australia Dollar +0.15% ↑0.6739 +0.0010	Indonesia 5Y +0.6bp 6.772
WTI Crude +0.56% 83.31 d +0.46	China CSI 300 -0.70% ↑3476.94 d -24.64	Philippines Peso NDF -0.15% 58.28 +0.09	China 10Y +0.5bp 2.255

Disclosures

The following Disclosures are being made in compliance with the SEBI Research Analyst Regulations 2014 (herein after referred to as the Regulations).

- Axis Securities Ltd. (ASL) is a SEBI Registered Research Analyst having registration no. INH000000297. ASL, the Research Entity (RE) as defined in the Regulations, is engaged in the business of providing Stock broking services, Depository participant services & distribution of various financial products. ASL is a subsidiary company of Axis Bank Ltd. Axis Bank Ltd. is a listed public company and one of India's largest private sector bank and has its various subsidiaries engaged in businesses of Asset management, NBFC, Merchant Banking, Trusteeship, Venture Capital, Stock Broking, the details in respect of which are available on www.axisbank.com.
- ASL is registered with the Securities & Exchange Board of India (SEBI) for its stock broking & Depository participant business activities and with the Association of Mutual Funds of India (AMFI) for distribution of financial products and also registered with IRDA as a corporate agent for insurance business activity.
- ASL has no material adverse disciplinary history as on the date of publication of this report.
- I/We, authors (Research team) and the name/s subscribed to this report, hereby certify that all of the views expressed in this research report accurately reflect my/our views about the subject issuer(s) or securities. I/We also certify that no part of my/our compensation was, is, or will be directly or indirectly related to the specific recommendation(s) or view(s) in this report. I/we or my/our relative or ASL does not have any financial interest in the subject company. Also I/we or my/our relative or ASL or its Associates may have beneficial ownership of 1% or more in the subject company at the end of the month immediately preceding the date of publication of the Research Report. Since associates of ASL are engaged in various financial service businesses, they might have financial interests or beneficial ownership in various companies including the subject company/companies mentioned in this report. I/we or my/our relative or ASL or its associate does not have any material conflict of interest. I/we have not served as director / officer, etc. in the subject company in the last 12-month period.

Research Team

Sr. No	Name	Designation	E-mail
1	Rajesh Palviya	SVP Technical & Derivative Research - (Head)	rajesh.palviya@axissecurities.in
2	Deveya Gaglani	Commodity Analyst	deveya.gaglani@axissecurities.in
3	Amit Madiwale	Commodity Analyst	amit.madiwale@axissecurities.in

5. ASL has not received any compensation from the subject company in the past twelve months. ASL has not been engaged in market making activity for the subject company.

6. In the last 12-month period ending on the last day of the month immediately preceding the date of publication of this research report, ASL or any of its associates may have: Received compensation for investment banking, merchant banking or stock broking services or for any other services from the subject company of this research report and / or; Managed or co-managed public offering of the securities from the subject company of this research report and / or; Received compensation for products or services other than investment banking, merchant banking or stock broking services from the subject company of this research report;

ASL or any of its associates have not received compensation or other benefits from the subject company of this research report or any other third-party in connection with this report

Terms & Conditions:

This report has been prepared by ASL and is meant for sole use by the recipient and not for circulation. The report and information contained herein is strictly confidential and may not be altered in any way, transmitted to, copied or distributed, in part or in whole, to any other person or to the media or reproduced in any form, without prior written consent of ASL. The report is based on the facts, figures and information that are considered true, correct, reliable and accurate. The intent of this report is not recommendatory in nature. The information is obtained from publicly available media or other sources believed to be reliable. Such information has not been independently verified and no guaranty, representation of warranty, express or implied, is made as to its accuracy, completeness or correctness. All such information and opinions are subject to change without notice. The report is prepared solely for informational purpose and does not constitute an offer document or solicitation of offer to buy or sell or subscribe for securities or other financial instruments for the clients. Though disseminated to all the customers simultaneously, not all customers may receive this report at the same time. ASL will not treat recipients as customers by virtue of their receiving this report.

Disclaimer:

Nothing in this report constitutes investment, legal, accounting and tax advice or a representation that any investment or strategy is suitable or appropriate to the recipient's specific circumstances. The securities and strategies discussed and opinions expressed, if any, in this report may not be suitable for all investors, who must make their own investment decisions, based on their own investment objectives, financial positions and needs of specific recipient.

This report may not be taken in substitution for the exercise of independent judgment by any recipient. Each recipient of this report should make such investigations as it deems necessary to arrive at an independent evaluation of an investment in the securities of companies referred to in this report (including the merits and risks involved), and should consult its own advisors to determine the merits and risks of such an investment. Certain transactions, including those involving futures, options and other derivatives as well as non-investment grade securities involve substantial risk and are not suitable for all investors. ASL, its directors, analysts or employees do not take any responsibility, financial or otherwise, of the losses or the damages sustained due to the investments made or any action taken on basis of this report, including but not restricted to, fluctuation in the prices of shares and bonds, changes in the currency rates, diminution in the NAVs, reduction in the dividend or income, etc. Past performance is not necessarily a guide to future performance. Investors are advised necessarily a guide to future performance. Investors are advised to see Risk Disclosure Document to understand the risks associated before investing in the securities markets. Actual results may differ materially from those set forth in projections. Forward-looking statements are not predictions and may be subject to change without notice.

ASL and its affiliated companies, their directors and employees may; (a) from time to time, have long or short position(s) in, and buy or sell the securities of the company(ies) mentioned herein or (b) be engaged in any other transaction involving such securities or earn brokerage or other compensation or act as a market maker in the financial instruments of the company(ies) discussed herein or act as an advisor or investment banker, lender/borrower to such company(ies) or may have any other potential conflict of interests with respect to any recommendation and other related information and opinions. Each of these entities functions as a separate, distinct and independent of each other. The recipient should take this into account before interpreting this document.

ASL and / or its affiliates do and seek to do business including investment banking with companies covered in its research reports. As a result, the recipients of this report should be aware that ASL may have a potential conflict of interest that may affect the objectivity of this report. Compensation of Research Analysts is not based on any specific merchant banking, investment banking or brokerage service transactions. ASL may have issued other reports that are inconsistent with and reach different conclusion from the information presented in this report.

Neither this report nor any copy of it may be taken or transmitted into the United State (to U.S. Persons), Canada, or Japan or distributed, directly or indirectly, in the United States or Canada or distributed or redistributed in Japan or to any resident thereof. If this report is inadvertently sent or has reached any individual in such country, especially, USA, the same may be ignored and brought to the attention of the sender. This report is not directed or intended for distribution to, or use by, any person or entity who is a citizen or resident of or located in any locality, state, country or other jurisdiction, where such distribution, publication, availability or use would be contrary to law, regulation or which would subject ASL to any registration or licensing requirement within such jurisdiction. The securities described herein may or may not be eligible for sale in all jurisdictions or to certain category of investors.

The Disclosures of Interest Statement incorporated in this document is provided solely to enhance the transparency and should not be treated as endorsement of the views expressed in the report. The Company reserves the right to make modifications and alternations to this document as may be required from time to time without any prior notice. The views expressed are those of the analyst(s) and the Company may or may not subscribe to all the views expressed therein.

Copyright in this document vests with Axis Securities Limited.

Axis Securities Limited, SEBI Single Reg. No.- NSE, BSE & MSEI – INZ000161633, ARN No. 64610, CDSL-IN-DP-CDSL-693-2013, SEBI-Research Analyst Reg. No. INH 000000297, SEBI Portfolio Manager Reg. No.- INP00000654, Main/Dealing off.- Axis Securities Ltd, Unit No.1001, 10th Floor, Level-6, Q2 Building, Aarum, Q Parc, Plot No. 4/1, TTC, Thane – Belapur Road, Ghansoli, Navi Mumbai. – 400 710., Regd. off.- Axis House,8th Floor, Wadia International Centre, PandurangBudhkar Marg, Worli, Mumbai – 400 025. Compliance Officer: Jatin Sanghani, Email: compliance.officer@axisdirect.in, Tel No: 022-49212706